



## tindari high stool - 554

High stool with structure in stove enamelled or chromed steel. Seat and back in solid plastic material padded with CFC free expanded polyurethane foam, cover in removable fabric, synthetic-leather or in leather.



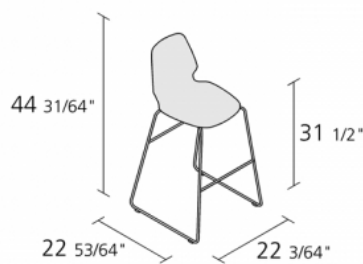
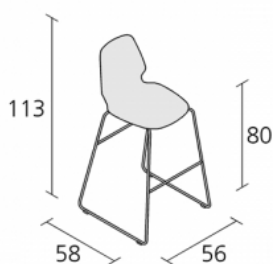
design  
Alfredo Häberli

This comfortable upholstered chair available in a range fabrics or leathers, offered in the more formal tindari version and the more welcoming taormina design, with arms. Tindari and taormina both feature a padded shell made from techno polymer with flexible polyurethane foam designed for a soft seat, with fully removable covers.

Based on the concept of segesta, taormina armchairs have a frame available with various finishes and shapes. Stacking chairs, comfortable armchairs, rocking chairs and on castors with adjustable height and swivel base are variants that, for shape and function, lend themselves to indoor use, for both home or contract.

Refined and eye-catching, available both in wood and steel with a cross base finish, they complete the range of tindari-taormina collection. Suitable with the upholstered seat of tindari and taormina, from today it is available also the new Kvadrat® Steelcut Trio fabric.

## Dimension

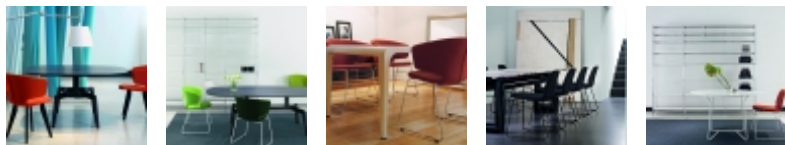


Year warranty: 10 years  
Production time: weeks  
Fire-retardancy  
Recyclable

Removable covers  
Boxes number: 1  
Max.number pieces per a box: 1  
Volume in m³: 0,5  
Gross weight in Kg: 11

---

## Gallery



## References

Hotel Villa  
Carlotta

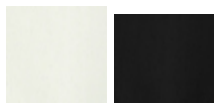
---

## Finiture

**castors** hard (RG )

---

**coloured stains**

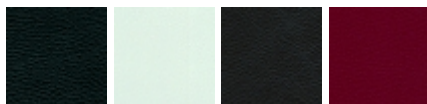


**synthetic-leather**

Ferrari: Stamskin® Top Ata tessuti®: Ego

---

**leather**



**leather 'S'**



**fabrics Kvadrat® B**

Hallingdal Divina Tonus Steelcut Trio

---

**fabrics Camira® A**

Xtreme Plus

---

**stove enamelled steel**



**\*\*\* available in stacking version with extra charge**

---