

Alias



kobi chair - 040

Chair with shell in enamelled or chromed steel; support belt and legs in stove enamelled aluminium.



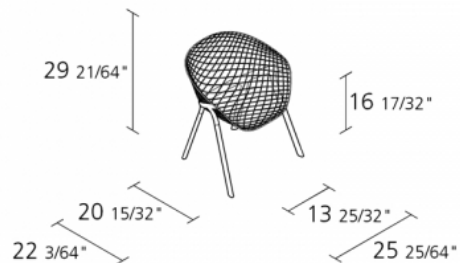
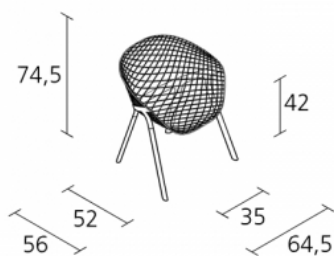


design
Patrick Norguet

A passion for technology, functionality and lightness are the values shared by the designer Patrick Norguet and Alias. Kobi has taken shape as a result of this affinity. Norguet has

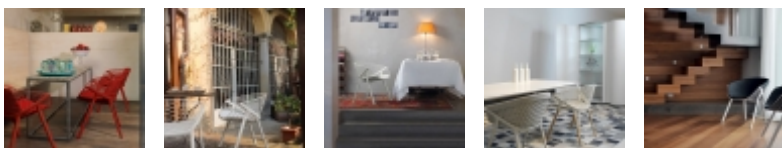
developed a new type of chair, inspired by the tradition of iron wire chairs, coming up with an elegant and light-weight structure: highly contemporary suspended architecture. The body is a sort of rigorous and enveloping basket, created by woven soldered round steel wire. The support belt, made from cast aluminium embraces the seat elegantly, totally enveloping the form. The leather or fabric cushions are available for the seat only, seat plus back and full shell option. They are shaped to adhere perfectly to the shell and to form a visual whole with the structure. Two different structures are available: support and legs in stove-enamelled aluminium with coloured or chromed shell; stove enamelled support and aluminium legs in oak-veneered aluminium with shell lacquered in different colours.

Dimension



Year warranty: 10 years
Production time: 0 weeks
Fire-retardancy
100% Recyclable
Boxes number: 1
Max.number pieces per a box: 1
Volume in m³: 0,432
Gross weight in Kg: 11,7

Gallery



Finiture

**stove enamelled
aluminium/steel**

