

# Alias



## kobi wood - 041

Chair with shell in enamelled or chromed steel; support belt in stove enamelled aluminium, legs in aluminium oak veneered.

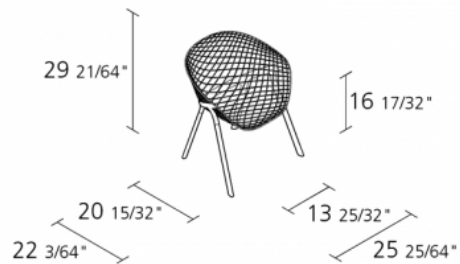
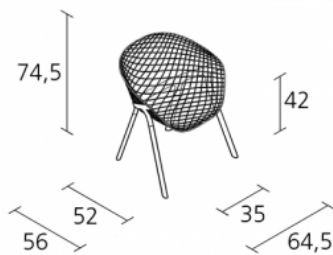




design  
Patrick Norguet

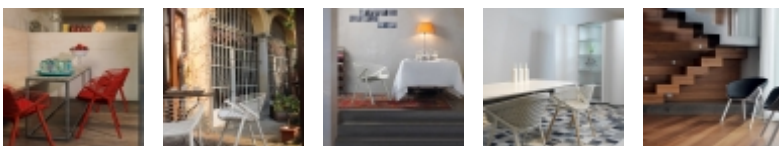
A passion for technology, functionality and lightness are the values shared by the designer Patrick Norguet and Alias. Kobi has taken shape as a result of this affinity. Norguet has developed a new type of chair, inspired by the tradition of iron wire chairs, coming up with an elegant and light-weight structure: highly contemporary suspended architecture. The body is a sort of rigorous and enveloping basket, created by woven soldered round steel wire. The support belt, made from cast aluminium embraces the seat elegantly, totally enveloping the form. The leather or fabric cushions are available for the seat only, seat plus back and full shell option. They are shaped to adhere perfectly to the shell and to form a visual whole with the structure. Two different structures are available: support and legs in stove-enamelled aluminium with coloured or chromed shell; stove enamelled support and aluminium legs in oak-veneered aluminium with shell lacquered in different colours.

## Dimension



Year warranty: 10 years  
Production time: 0 weeks  
Fire-retardancy  
Recyclable  
Boxes number: 1  
Max.number pieces per a box: 1  
Volume in m<sup>3</sup>: 0,432  
Gross weight in Kg: 11,7

## Gallery



# Finiture

stove enamelled  
aluminium/steel

