

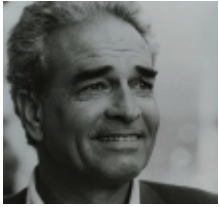
Alias



biplane 170x120 - 410_0

Rectangular table with structure comprised of 4 legs in die-cast aluminium with painted finishes, connected by shelf. Top and shelf available in white acrylic stone thickness 15 mm.

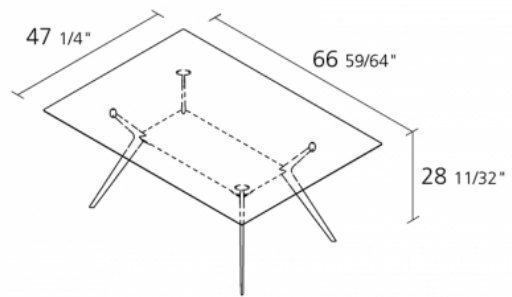
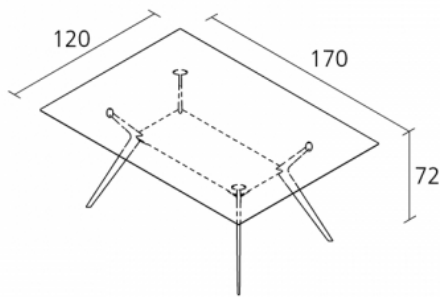




design
Alberto Meda

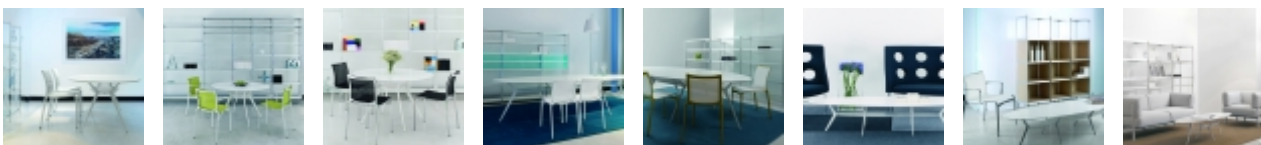
A strong grasp of form and composition has given life to a collection of tables characterised by great flexibility in terms of shape, size and range of uses. The project derives from the idea of creating a broad and differentiated range of designs. The legs in die-cast aluminium are fixed both to a central base and to the table top forming a solid structure. The number of legs may vary as a function of the dimensions of the top, available in different shapes and finishes. The biplane collection has many variants, just perfect for any environment. The square table, the round ones with tops in different diameters, the rectangular one and the little tables are available with tops in oak veneer or in MDF with white polyurethane lacquer. The elegant elliptical versions complete the biplane collection: the 210x125 cm table which is perfect for dining room, the one with 330x130 cm top is ideal for office premises and meeting rooms and the little table with oval top 150x55 cm, height 39 cm is ideal for dining rooms. All the tops of these versions are available only in MDF with enameled polyurethane white finish, which is scratch resistance.

Dimension



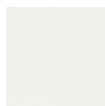
Year warranty: 2 years
Production time: 4 weeks
Fire-retardancy
Recyclable
Boxes number: 4
Max.number pieces per a box: 1
Volume in m³: 0,253
Gross weight in Kg: 75

Gallery



Finiture

stove enamelled aluminium



acrylic stone

