

MEGA

Design by Diego Fortunato.

VIBIA
LIGHT IS CREATION

Reference

0570.

Application

Ceiling Lamps

Installation type

Surface

Description

Accessible ceiling light for indoor use, designed by Diego Fortunato. Direct, diffuse and uniform light distribution. Available in two finishes: shiny stainless steel and matt white lacquer. Polyethylene top diffuser and methacrylate bottom diffuser. Its large size makes it ideal for lighting large spaces from a single point. Features dimmable electronic ballast (DALI System).

Diffuser

Polyethylene upper diffuser and acrylic lower diffuser

Finish



0570-01.

Shining
stainless steel

0570-03.

Matt white
lacquer

Sketch



Electrical characteristics

6 x 2G11 230V 36W



Total 216 W



Physical characteristics

1 Box / 0.38 x 1.37 x 1.37 m. / Vol. 0.7080 m³ /
Gross weight 33.2 kg. / Net weight 15.9 kg.

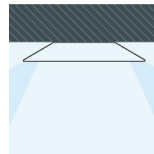
Installation and assembly

Follow instructions of the installation guide

Light distribution

General lighting

Lamp for general lighting that equally distributes the light in all directions.



Photometric data

Efficiency : 47.07%

Coordinate system : C-G

Total flux : 17400.00 lm

Maximum value : 112.12 cd/klm

Light position : C=0.00 G=0.00

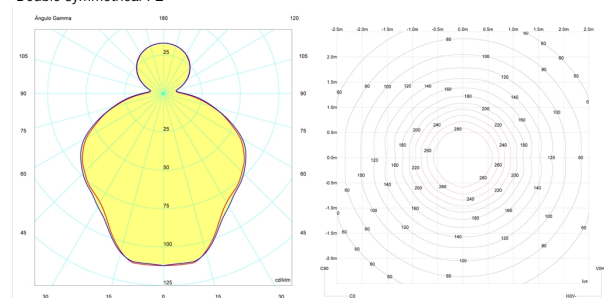
Double symmetrical : 2

Isolux : Isolux (Suelo)

Light position :

X=0.00m Y=0.00m Z=3.00m

Light rotation :



Certificates

