

PLUS

Design by X. Claramunt and M. de Mas.

VIBIA
LIGHT IS CREATION

Reference

0625.

Application

Ceiling Lamps

Installation type

Surface

Description

Symmetrical ceiling light, designed by X. Claramunt and M. de Mas. Direct, diffuse and uniform light distribution. Convex methacrylate diffuser and matt white lacquer finish, though the whole fixture can be painted in the desired colour to make it blend perfectly into the ceiling. Its form recalls a real skylight. Features dimmable electronic ballast (DALI System).

Diffuser

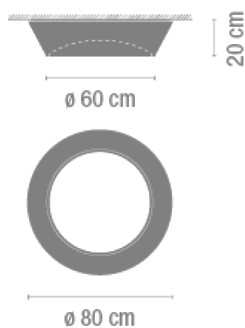
Acrylic diffuser

Finish



0625-03.
Matt white
lacquer

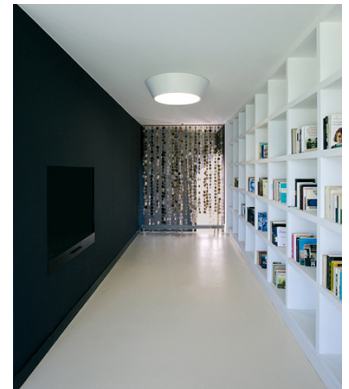
Sketch



Electrical characteristics

4 x G5 230V 24W (T5)

Total 96 W



Physical characteristics

1 Box / 0.27 x 0.96 x 0.96 m. / Vol. 0.2488 m³ /
Gross weight 19.0 kg. / Net weight 9.0 kg.

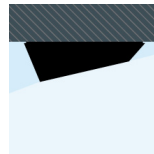
Installation and assembly

Follow instructions of the installation guide

Light distribution

General lighting

Lamp for general lighting that equally distributes the light in all directions.



Photometric data

Efficiency : 28.62%

Coordinate system : C-G

Total flux : 7000.00 lm

Maximum value : 96.08 cd/klm

Light position : C=0.00 G=0.00

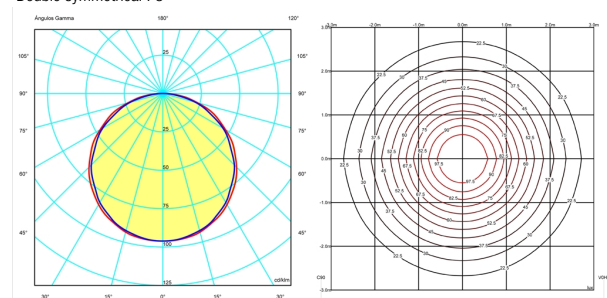
Double symmetrical : 3

Isolux : Isolux (Suelo)

Light position :

X=0.00m Y=0.00m Z=3.00m

Light rotation :



Certificates

