

TREE

Design by Pete Sans.

VIBIA
LIGHT IS CREATION

Reference

4015.

Application

Outdoor lamps

Installation type

Surface / Built-in

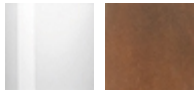
Description

Light for outdoor use designed by Pete Sans. With a polyethylene diffuser, its base is available in two finishes: white lacquer or rust brown lacquer.

Diffuser

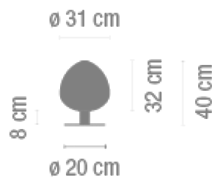
Polyethylene diffuser

Finish



4015-03. White lacquer
4015-14. Oxide lacquer

Sketch



Electrical characteristics

1 x COMPACT FLUORESCENT E27 230V 15W



Total 15 W



Physical characteristics

1 Box / 0.54 x 0.54 x 0.46 m. / Vol. 0.1341 m³ /
Gross weight 5.8 kg. / Net weight 3.5 kg.

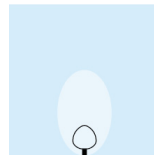
Installation and assembly

Follow instructions of the installation guide

Light distribution

General lighting

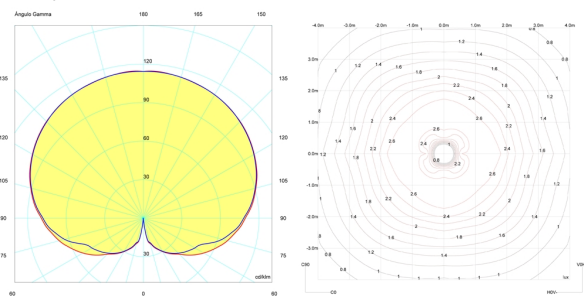
Lamp for general lighting that equally distributes the light in all directions.



Photometric data

Efficiency : 93.69%
Coordinate system : C-G
Total flux : 900.00 lm
Maximum value : 114.83 cd/klm
Light position : C=0.00 G=175.00
Double symmetrical : 3

Isolux : Isolux (Suelo)
Light position :
X=0.00m Y=0.00m Z=0.10m
Light rotation :



Certificates

