

BREAK

Design by Xuclà & Alemany.

VIBIA
LIGHT IS CREATION

Reference

4110.

Application

Outdoor lamps

Installation type

Surface

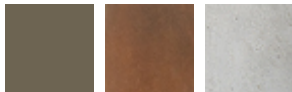
Description

Outdoor wall light designed by Xuclà & Alemany. It gives a pleasant, subtle light through the methacrylate diffuser, and can withstand tough outdoor conditions. Available in khaki lacquer, oxide lacquer and concrete.

Diffuser

Acrylic diffuser

Finish

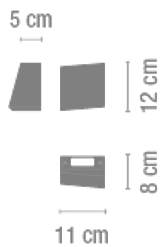


4110-07.
Khaki lacquer

4110-54.
Oxide-brown
lacquer

4110-80.
Concrete

Sketch



Electrical characteristics

1 x LED 3W 700mA



Total 3 W



Physical characteristics

1 Box / 0.13 x 0.20 x 0.21 m. / Vol. 0.0055 m³ /
Gross weight 0.7 kg. / Net weight 0.5 kg.

Installation and assembly

Follow instructions of the installation guide

Light distribution

Orientation

Lamp having a beam powerful enough to define profiles and the surrounding architecture.



Photometric data

Efficiency : 26.92%

Coordinate system : C-G

Total flux : 81.00 lm

Maximum value : 319.62 cd/klm

Light position : C=270.00 G=95.00

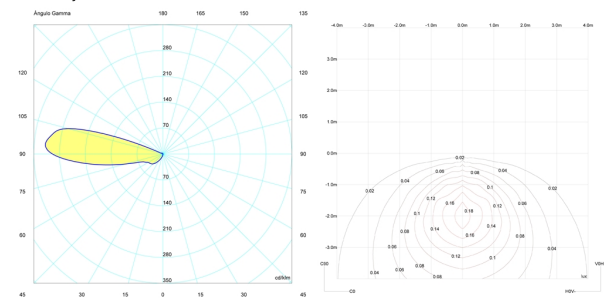
Double symmetrical : 4

Isolux : Isolux (suelo)

Light position :

X=0.00m Y=0.00m Z=3.00m

Light rotation :



Certificates

