

ALPHA

Design by Ramos & Bassols.

VIBIA
LIGHT IS CREATION

Reference

7950.

Application

Wall Lamps

Installation type

Surface

Description

Picture light by Ramos & Bassols. Available in black or white lacquer. IR and UV-free light beam Ra: 80. LED light source.

Diffuser

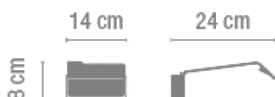
Without diffuser

Finish

 **7950-04.**
Matt black
lacquer

 **7950-03.**
Matt white
lacquer

Sketch

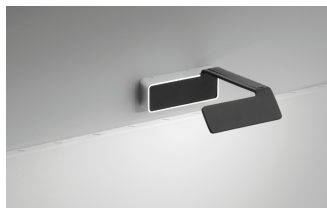


Electrical characteristics

3 x LED 3W 700mA



Total 9 W



Physical characteristics

1 Box / 0.26 x 0.26 x 0.26 m. / Vol. 0.0175 m³ /
Gross weight 1.2 kg. / Net weight 0.7 kg.

Installation and assembly

Follow instructions of the installation guide

Light distribution

Highlight

Lamp used to highlight a specific element.



Photometric data

Efficiency : 47.65%

Coordinate system : C-G

Total flux : 157.00 lm

Maximum value : 383.76 cd/klm

Light position : C=0.00 G=0.00

Double symmetrical : 3

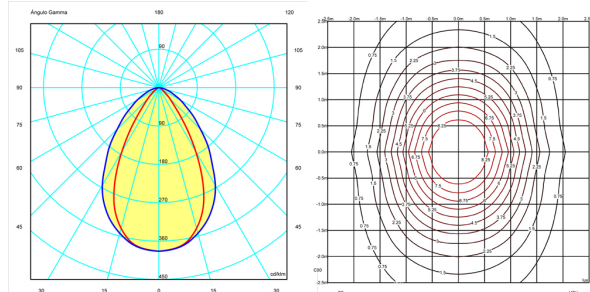
Isolux : Isolux (suelo)

Light position :

X=0.00m Y=0.00m Z=2.50m

Light rotation :

X=0.00° Y=0.00° Z=-90.00°



Certificates

