

DOMO

Design by Ramos & Bassols.

VIBIA
LIGHT IS CREATION

Reference

8201.

Application

Ceiling Lamps

Installation type

Surface

Description

Surface-mounted ceiling light. Design by Ramos & Bassols. Matt white lacquer finish with aluminium diffuser. LED light source

Diffuser

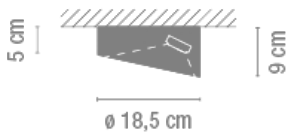
Polycarbonate diffuser

Finish



8201-03.
Matt white
lacquer

Sketch

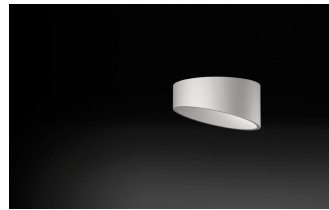


Electrical characteristics

3 x LED 3W 700mA



Total 9 W



Physical characteristics

1 Box / 0.26 x 0.26 x 0.26 m. / Vol. 0.0170 m³ /
Gross weight 1.6 kg. / Net weight 1.1 kg.

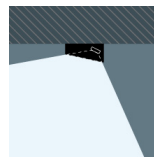
Installation and assembly

Follow instructions of the installation guide

Light distribution

Highlight

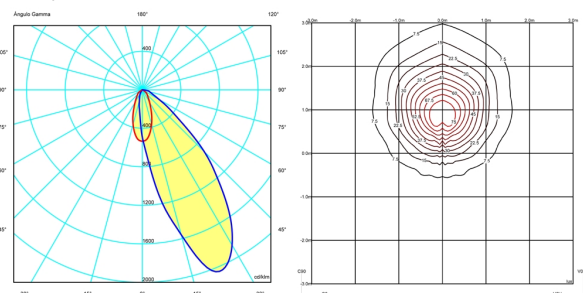
Lamp used to highlight a specific element.



Photometric data

Efficiency : 100.00%
Coordinate system : C-G
Total flux : 340.49 lm
Maximum value : 2099.31 cd/klm
Light position : C=90.00 G=25.00
Double symmetrical : 4

Isolux : Isolux (suelo)
Light position :
X=0.00m Y=0.00m Z=3.00m
Light rotation :



Certificates

