

BASIK

Design by Proli Diffusion Studio.

VIBIA
LIGHT IS CREATION

Reference

8632.

Application

Ceiling Lamps

Installation type

Surface

Description

Surface-mounted panel light in a compact size, available in a chrome finish and with a halogen light source. Ideal for transit areas.

Diffuser

Borosilicate glass diffuser

Finish



8632-01.
Chrome

Sketch

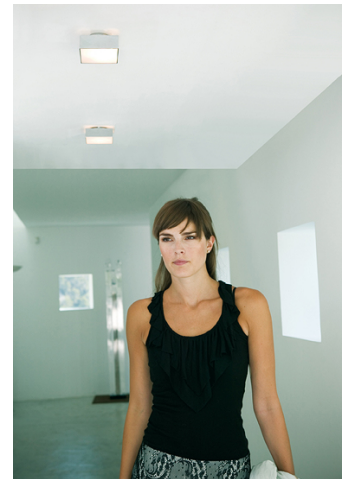


Electrical characteristics

1 x G9 230V 33W Eco



Total 33 W



Physical characteristics

1 Box / 0.13 x 0.20 x 0.21 m. / Vol. 0.0055 m³ /
Gross weight 2.0 kg. / Net weight 1.8 kg.

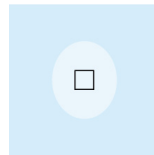
Installation and assembly

Follow instructions of the installation guide

Light distribution

General lighting

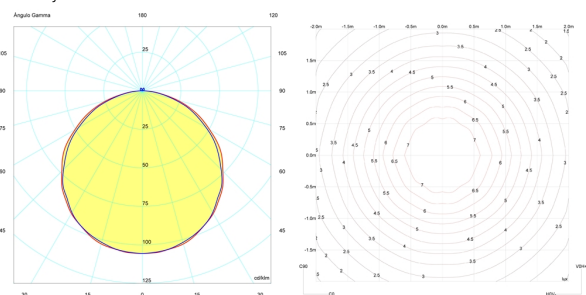
Lamp for general lighting that equally distributes the light in all directions.



Photometric data

Efficiency : 31.88%
Coordinate system : C-G
Total flux : 460.00 lm
Maximum value : 106.23 cd/klm
Light position : C=75.00 G=5.00
Double symmetrical : 3

Isolux : Isolux (suelo)
Light position :
X=0.00m Y=0.00m Z=2.50m
Light rotation :
X=0.00° Y=0.00° Z=-90.00°



Certificates

