

SIGNAL

Design by Proli Diffusion Studio & Joan Buxadé.

VIBIA
LIGHT IS CREATION

Reference

8720.

Application

Wall Lamps

Installation type

Surface

Description

This is a design which combines glass with steel and is characterised by extremely high-quality finishes in matt nickel and sand-blasted safety glass. Compact in size (16x16cm), it need not be recessed. It gives light to the front and sides.

Diffuser

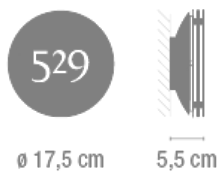
Optical-glass diffuser

Finish



8720-30.
Stainless steel

Sketch

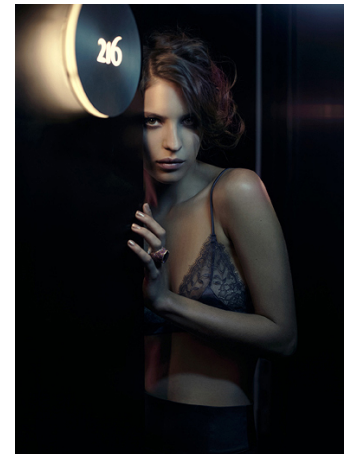


Electrical characteristics

1 x COMPACT FLUORESCENT GX53 230V 9W



Total 9 W



Physical characteristics

1 Box / 0.13 x 0.20 x 0.21 m. / Vol. 0.0055 m³ /
Gross weight 1.1 kg. / Net weight 0.9 kg.

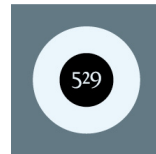
Installation and assembly

Follow instructions of the installation guide

Light distribution

Orientation

Lamp having a beam powerful enough to define profiles and the surrounding architecture.



Photometric data

Efficiency : 52.09%

Coordinate system : C-G

Total flux : 330.00 lm

Maximum value : 86.02 cd/klm

Light position : C=0.00 G=0.00

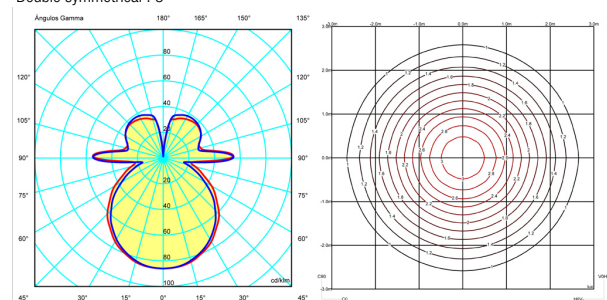
Double symmetrical : 3

Isolux : Isolux (suelo)

Light position :

X=0.00m Y=0.00m Z=3.00m

Light rotation :



Certificates

