

STAGE

Design by X. Claramunt and M. de Mas.

VIBIA
LIGHT IS CREATION

Reference

8971.

Application

Ceiling Lamps

Description

STAGE is a ceiling light with a rotating spotlight to position the light. Designed by X. Claramunt & M. de Mas. It is available only in matt graphite lacquer. It is available in three colours: white lacquer, chrome or matt graphite.

Diffuser

Without diffuser

Finish

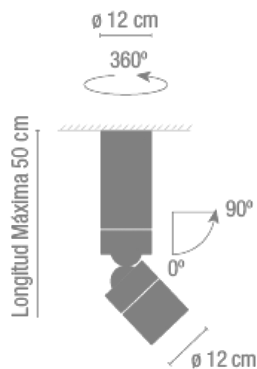


8971-01.
Chrome

8971-03.
White lacquer

8971-18.
Matt graphite
lacquer

Sketch

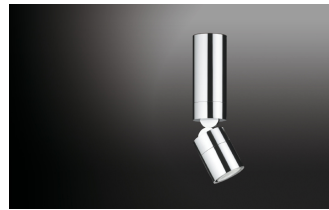


Electrical characteristics

1 x PAR 30 E27 230V 100W



Total 100 W



Physical characteristics

1 Box / 0.21 x 0.21 x 0.74 m. / Vol. 0.0326 m³ /
Gross weight 5.0 kg. / Net weight 4.7 kg.

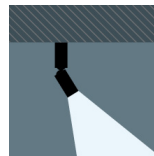
Installation and assembly

Follow instructions of the installation guide

Light distribution

Highlight

Lamp used to highlight a specific element.



Photometric data

Efficiency : 97.99%

Coordinate system : C-G

Total flux : 1060.00 lm

Maximum value : 1825.41 cd/klm

Light position : C=0.00 G=0.00

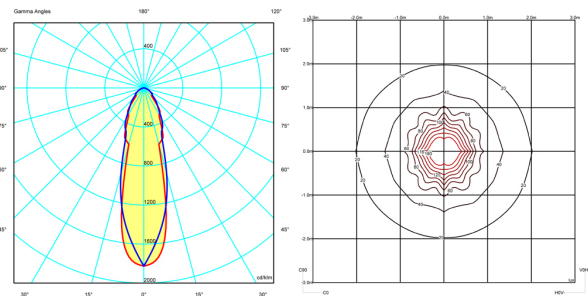
Double symmetrical : 3

Isolux : Isolux (Suelo)

Light position :

X=0.00m Y=0.00m Z=3.00m

Light rotation :



Certificates

