

m o o o i<sup>®</sup>



## Nest Chair

---

The Nest Chair's linear, clear metal structure lifts the plumpest and softest cushions from the floor, creating a comfy, elevated nest for one or more people.

---

<b>Designer</b>	Marcel Wanders
<b>Year of design</b>	2013
<b>Material</b>	KTL and powdercoated steelframe (suitable for outdoor use); Mixed foam, feather & fiber flock filling

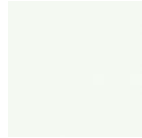
---

---

## Nest Frame



**Grey silver**  
Grey silver (fine  
texture mettalic  
coating)



**Satin white**  
Satin white 9016  
(high gloss  
coating)

---

## upholstery categories

Flower Bits  
One Minute  
Oray  
Faux  
Softlinen  
COF

Bouclé  
Jacquard  
Arredo Leather  
Cervino Leather

*All fabrics are removable*

---

## Flower Bits



---

## One Minute



## Oray

### composition

8% co, 38% vi, 15% pl, 39% li

### abrasion

25.000 martindale

### lightfastness 4

### firetest

FR BS5852 0/1

EN1021 I&2



Oray  
**Cream**



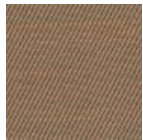
Oray  
**Sand**



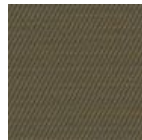
Oray  
**Rock**



Oray  
**Mineral**



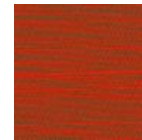
Oray  
**Gravel**



Oray  
**Dark Gull**



Oray  
**Copper**



Oray  
**Rust**



Oray  
**Flamboyant**



Oray  
**Oil**



Oray  
**Aqua**



Oray  
**Peyote**



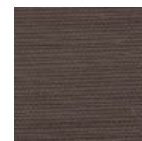
Oray  
**Ocean**



Oray  
**Metal**



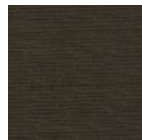
Oray  
**Griffin**



Oray  
**Dusk**



Oray  
**Chestnut**



Oray  
**Dark**



Oray  
**Indigo**



Oray  
**Ochre**

---

## Faux

### composition

100% pl

### abrasion

50.000 martindale

### lightfastness 4

### firetest

FR BS5852 0/1

EN1021 I&2



Faux  
**Black**



Faux  
**Brown**

---

## Softlinen

### composition

100% Linen

### abrasion

25.000 martindale

### lightfastness 6

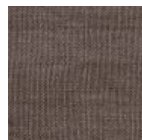
### firetest

FR BS5852 0/1

EN1021 I&2



Softlinen  
**Beige**



Softlinen  
**Brown**

---

## Bouclé

### composition

43% co, 28% pan, 14% pa, 12% vi, 3% pl

### abrasion

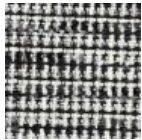
20.000> martindale

### lightfastness 4

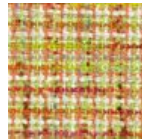
### firetest

FR BS5852 0/1

EN1021 I&2



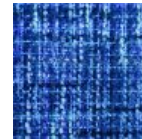
Bouclé  
**Black white**



Bouclé  
**Rainbow**



Bouclé  
**Brown**



Bouclé  
**Blue**

---

## Jacquard andaz

### composition:

34% cotton - 30% viscose - 24% linen - 12% polyamide

### abrasion:

25000 martindale

### firetest:

BS 5852 : Part I : 1979

BS EN 1021 I&2



Jacquard  
**Andaz**

---

## Jacquard Old Black & Blue

### composition

52% vi, 38% co, 10% li

### abrasion

20.000> martindale

### firetest

FR BS5852 0/1

EN1021 I&2



Jacquard  
**Old Blue**



Jacquard  
**Old Black**

---

## Jaquard Fresco

### composition

40% vi ,36% co,14% pl, 10% li

### abrasion

20.000> martindale

### firetest

FR BS5852 0/1

EN1021 I&2



Jaquard  
**Fresco**

---

## Arredo Leather

### composition

100% semi aniline leather

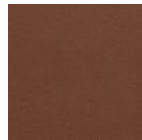
### firetest

FR BS5852 0/1

EN1021 I&2



Arredo Leather  
**Black**



Arredo Leather  
**Brown**



Arredo Leather  
**White**

---

## Cervino Leather

### composition

100% aniline leather

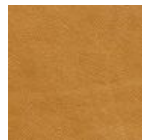
### firetest

FR BS5852 0/1

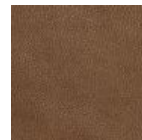
EN1021 I&2



Cervino Leather  
**Anthracite**



Cervino Leather  
**Cognac**



Cervino Leather  
**Mud**



Cervino Leather  
**Pure**

---

## cleaning instructions

Moooi recommends using a good furniture polish and a soft cloth. Apply generously in layers to the surface and use the cloth to shine. Do not use abrasive fabrics, gently remove tough stains with warm water and a trusted multi-surface cleaner.

# m o o o i<sup>®</sup>

## dimensions

110cm | 43,3"



58cm | 22,8"

55cm | 21,7"

88cm | 34,6"

81cm | 31,9"



48cm | 18,9"

