

m o o o i<sup>®</sup>



## Nut Dining Chair

---

Sitting in the warm embrace of the Nut Dining Chair by Marcel Wanders you will feel protected and as precious as the most beautiful pearl in the sea. The precious flavour of its design and the rich pattern of its textiles distinguish it from the mass. Its cushions enclose you in the comfortable embrace of Marcel Wander's signature textile 'Oil'.

---

<b>Designer</b>	Marcel Wanders
<b>Year of design</b>	2013
<b>Material</b>	Oak veneer bent plywood; solid oak legs

---

---

## upholstery categories

Oil	Jacquard Fresco
Machedil Sottile	Jacquard Old Blue
Machedil Grezzo	Twill
Oray	Aredo Leather
Manga	Cervino Leather
Faux	COF
Bouclé	
Jacquard Canvas	

---

## Oil

### composition:

64% VI / 27% CO / 9% PA.



---

## Macchedil, Sottile

### composition

49% vi, 24% pl, 21% li, 6% co

### abrasion

30.000 martindale

### lightfastness 4

### firetest

FR BS5852 0/1

EN1021 I&2



Macchedil Sottile  
**Black indigo**



Macchedil Sottile  
**Pinkish**



Macchedil Sottile  
**Off white**



Macchedil Sottile  
**Light grey**



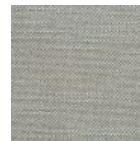
Macchedil Sottile  
**Light brown**



Macchedil Sottile  
**Grey grey**



Macchedil Sottile  
**Anthracite**



Macchedil Sottile  
**Blue grey**



Macchedil Sottile  
**Cappucino**



Macchedil Sottile  
**Deep blue**

---

## Macchedil, Grezzo

### composition

47% co, 20% vi, 18% pi, 8% li, 5% pc, 2% af

### abrasion

18.000 martindale

### lightfastness 4

### firetest

FR BS5852 0/1

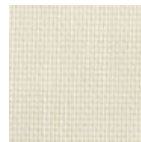
EN1021 1&2



Macchedil Grezzo  
**Black indigo**



Macchedil Grezzo  
**Pinkish**



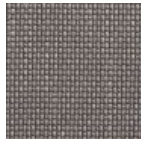
Macchedil Grezzo  
**Offwhite**



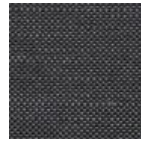
Macchedil Grezzo  
**Light grey**



Macchedil Grezzo  
**Light brown**



Macchedil Grezzo  
**Grey grey**



Macchedil Grezzo  
**Anthracite**



Macchedil Grezzo  
**Blue grey**



Macchedil Grezzo  
**Cappuchino**



Macchedil Grezzo  
**Deepblue**

## Oray

### composition

8% co, 38% vi, 15% pl, 39% li

### abrasion

25.000 martindale

### lightfastness 4

### firetest

FR BS5852 0/1

EN1021 I&2



Oray  
**Cream**



Oray  
**Sand**



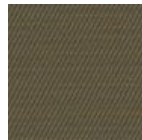
Oray  
**Rock**



Oray  
**Mineral**



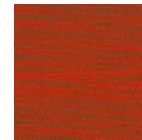
Oray  
**Gravel**



Oray  
**Dark Gull**



Oray  
**Copper**



Oray  
**Rust**



Oray  
**Flamboyant**



Oray  
**Oil**



Oray  
**Aqua**



Oray  
**Peyote**



Oray  
**Ocean**



Oray  
**Metal**



Oray  
**Griffin**



Oray  
**Dusk**



Oray  
**Chestnut**



Oray  
**Dark**



Oray  
**Indigo**



Oray  
**Ochre**

---

## Manga

**composition**

29% pl, 71% co

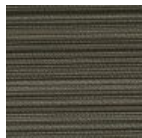
**abrasion**

40.000 martindale

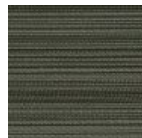
**lightfastness 5****firetest**

FR BS5852 0/1

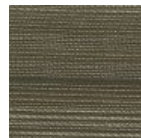
EN1021 I&2



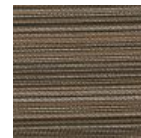
Manga  
**Grey**



Manga  
**Blue**



Manga  
**Green**



Manga  
**Brown**

---

## Faux

**composition**

100% pl

**abrasion**

50.000 martindale

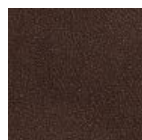
**lightfastness 4****firetest**

FR BS5852 0/1

EN1021 I&2



Faux  
**Black**



Faux  
**Brown**

---

## Bouclé

### composition

43% co, 28% pan, 14% pa, 12% vi, 3% pl

### abrasion

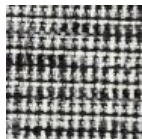
20.000> martindale

### lightfastness 4

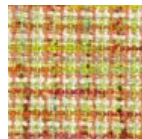
### firetest

FR BS5852 0/1

EN1021 I&2



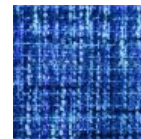
Bouclé  
**Black white**



Bouclé  
**Rainbow**



Bouclé  
**Brown**



Bouclé  
**Blue**

---

## Jacquard andaz

### composition:

34% cotton - 30% viscose - 24% linen - 12% polyamide

### abrasion:

25000 martindale

### firetest:

BS 5852 : Part I : 1979

BS EN 1021 I&2



Jacquard  
**Andaz**

---

## Jacquard Old Black & Blue

### composition

52% vi, 38% co, 10% li

### abrasion

20.000> martindale

### firetest

FR BS5852 0/1

EN1021 I&2



Jacquard  
**Old Blue**



Jacquard  
**Old Black**

---

## Jaquard Fresco

### composition

40% vi ,36% co,14% pl, 10% li

### abrasion

20.000> martindale

### firetest

FR BS5852 0/1

EN1021 I&2



Jaquard  
**Fresco**



---

## Twill

### composition

72% wo, 8% pa, 20% pl

### abrasion

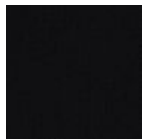
75.000 martindale

### lightfastness 5

### firetest

FR BS5852 0/1

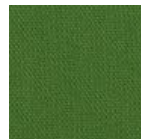
EN1021 I&2



Twill  
**Caviar**



Twill  
**Graphite**



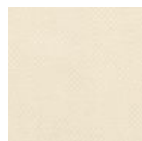
Twill  
**Grass**



Twill  
**Light grey**



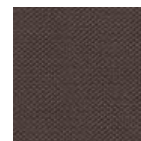
Twill  
**Linen**



Twill  
**Natural**



Twill  
**Passion**



Twill  
**Walnut**

---

## Arredo Leather

### composition

100% semi aniline leather

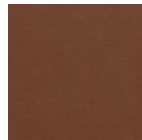
### firetest

FR BS5852 0/1

EN1021 I&2



Arredo Leather  
**Black**



Arredo Leather  
**Brown**



Arredo Leather  
**White**

---

## Cervino Leather

### composition

100% aniline leather

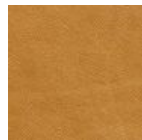
### firetest

FR BS5852 0/1

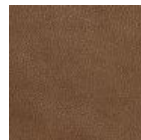
EN1021 I&2



Cervino Leather  
**Anthracite**



Cervino Leather  
**Cognac**



Cervino Leather  
**Mud**



Cervino Leather  
**Pure**

# m o o o i<sup>®</sup>

---

## colours



Wood Stained  
Cinnamon



Wood Stained  
White Washed

---

## cleaning instructions

Moooi recommends using a good furniture polish and a soft cloth. Apply generously in layers to the surface and use the cloth to shine. Do not use abrasive fabrics, gently remove tough stains with warm water and a trusted multi-surface cleaner.

---

## packaging

H 80 cm | 31,5"

W 52 cm | 20,5"

D 56 cm | 22"

Colli 1/1

With packaging:

12 KG | 26,5 lb

# m o o o i<sup>®</sup>

---

## dimensions

