

**A**  
 cucitura rossa/nera  
 red/black seam

**A1**  
 cucitura rossa/nera  
 red/black seam

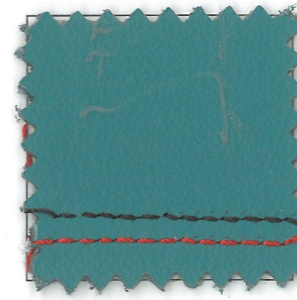
**B**  
 cucitura nera  
 black seam

**C**  
 cucitura gialla/bianca  
 yellow/white seam

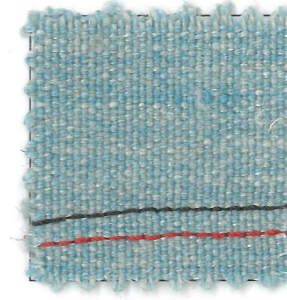
**C1**  
 cucitura gialla/bianca  
 yellow/white seam

A+A= cucitura rossa o nera /red or black seam  
 A+B= cucitura nera/black seam  
 B+A= cucitura nera/black seam  
 B+B= cucitura nera/black seam  
 C+C= cucitura gialla o bianca/ yellow or white seam

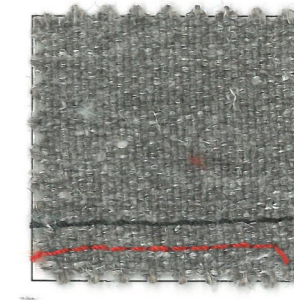
DANI florida 2236



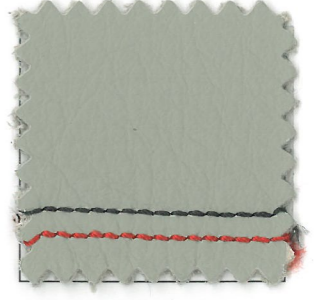
KVADRAT willow 712



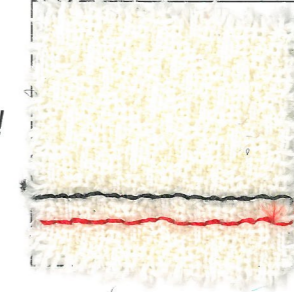
KVADRAT willow 152



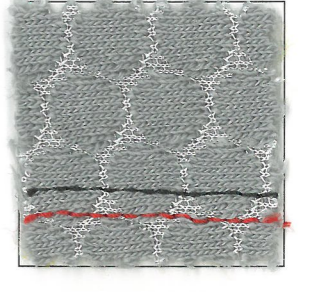
DANI florida 2128



KVADRAT ripple 101

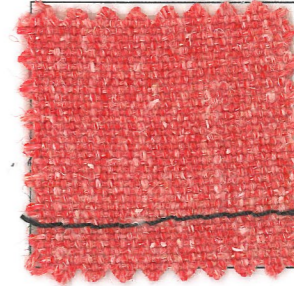


INNOFA dot grey

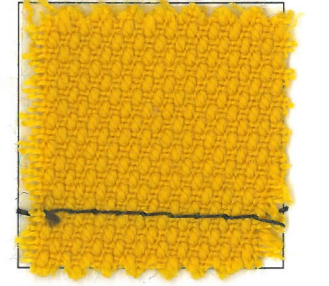


*no trapunta! no quilting !*

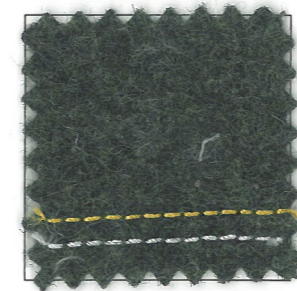
KVADRAT willow 542



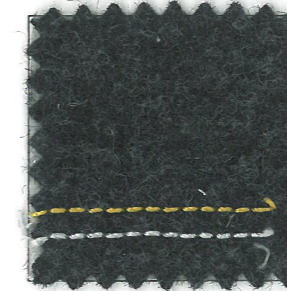
KVADRAT steelcut2 445



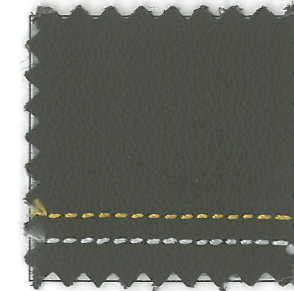
KVADRAT divina md 973



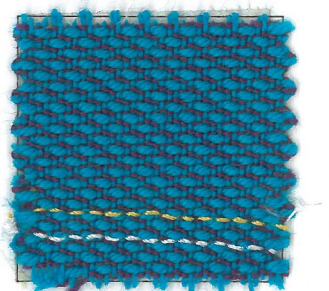
KVADRAT divina md 193



DANI florida 2062



KVADRAT steelcut trio2 865



INNOFA dotty prune



*no trapunta! no quilting !*