

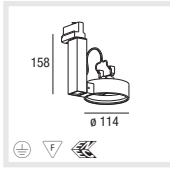


**D**  
 Leuchtenkörper aus Aluminium, pulverbeschichtet  
 Oberfläche in weißem, grauem oder schwarzem Strukturlack  
 Leuchtenkopf wahlweise in Gehäusefarbe oder chrom galvanisiert  
 Strahler 350° dreh- und 90° schwenkbar  
 Mit integriertem elektronischem Transformator 75VA  
 Inklusive 3-Phasen Universaladapter, mit Phasenwahl  
 Werkzeuglose Aufnahme von Farbfiltern, Skulptur-, Floodlinsen, Wabenraster  
 Deckenaufbau- oder Deckeneinbaupunktauslass als Zubehör erhältlich

**E**  
 Housing made of aluminium  
 Surface white, grey or black powder coating  
 Luminaire head available in housing colour or chrome galvanized  
 Spotlight 350° rotatable and 90° tiltable  
 Integrated electronic transformer 75VA  
 With 3 phase universal adaptor  
 No tools needed for insertion of filters, lenses and louvers  
 Point outlet for recessed or surface mounting as accessory

**I**  
 Corpo di alluminio  
 Superficie con vernice strutturata in bianco, grigio o nero  
 Testa dell'apparecchio o nel colore del corpo o galvanizzata in cromo  
 Faretto girevole 350° e orientabile 90°  
 Con trasformatore elettronico di 75VA integrato  
 Con adattatore universale a 3 fasi  
 Integrazione di filtri colorati, lenti e reticoli a nido d'ape senza attrezzi  
 Accessori: Rosone da soffitto o da incasso

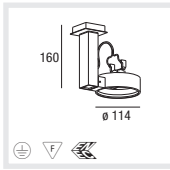
## Type



STRAIGHT QR-LP 111 G53

**CAPACITY**  
1x75W

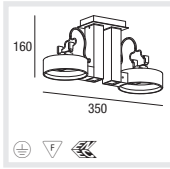
**CODE**  
080-3517#



STRAIGHT QR-LP 111 G53

**CAPACITY**  
1x75W

**CODE**  
080-3514#



STRAIGHT QR-LP 111 G53

**CAPACITY**  
2x75W

**CODE**  
080-3424#

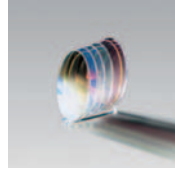
## Colours



080-... 5 white/chrome  
6 grey  
7 white  
8 black  
9 black/chrome

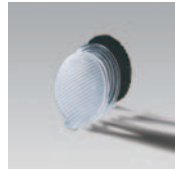


## Accessories



**Farb- und Sperrfilter**  
 Colour and protection filters  
 Filtri di colore e di protezione

TYPE	Ø/H (MM)	CODE
■ dichroic colour filter	105/3	006-92231
■ dichroic colour filter	105/3	006-92232
■ dichroic colour filter	105/3	006-92233
■ dichroic colour filter	105/3	006-92234
■ UV protection filter	105/3	006-92235
■ IR protection filter	105/3	006-92236



**Linsen und Wabenraster**  
 Lenses and honeycomb louver  
 Lenti e schermi a nido d'ape

TYPE	Ø/H (MM)	CODE
■ Sculpture lens	105/3	006-92237
■ Flood lens clear	105/3	006-92238
■ Honeycomb louver	105/3	006-93132

006-... S grey  
W white  
B black



**Aufbaugeschäuse Punktauslass**  
 Surface housing/point outlet  
 Rosone per soffitto

COLOUR	CODE
grey	282-GA70-1
black	282-GA70-2
white	282-GA70-3



**Einputzdose Punktauslass**  
 Recessed housing/point outlet  
 Rosone per incasso nel soffitto

COLOUR	CODE
grey	282-XTSA76
black	282-XTSA77
white	282-XTSA78