

STRAIGHT WALLWASHER

516

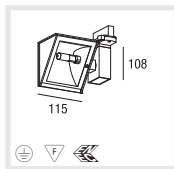


D
 Leuchtenkörper aus Aluminium, pulverbeschichtet
 Oberfläche in weißem, grauem oder schwarzem Strukturlack
 Strahler 350° dreh- und 45° schwenkbar
 Reflektor aus Reinaluminium mit Wallwasercharakteristik
 Elektronisches Betriebsgerät in Leuchte eingebaut
 Inklusive 3-Phasen Universaladapter, mit Phasenwahl
 Deckenaufbau- oder Deckeneinbaupunktauslass als Zubehör erhältlich

E
 Housing made of aluminium
 Surface white, grey or black powder coating
 Spotlight 350° rotatable and 45° tiltable
 Wall washer reflector made of pure aluminium
 Integrated electronic transformer
 With 3 phase universal adaptor
 Point outlet for recessed or surface mounting as accessory

I
 Corpo di alluminio
 Superficie con vernice strutturata in bianco, grigio o nero
 Faretto girevole 350° e orientabile 45°
 Faretto di alluminio iperpuro di caratteristica "wallwasher"
 Reattori elettronici inclusi nell'apparecchio
 Con adattatore universale a 3 fasi
 Accessori: Rosone da soffitto o da incasso

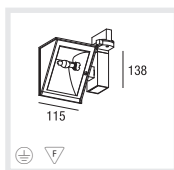
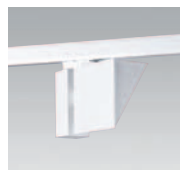
Type



STRAIGHT QT12-LP GY6,35

CAPACITY
 1x75W

CODE
 080-3614#



STRAIGHT HIT-TC-CE GU6,5 EVG

CAPACITY
 1x20W

CODE
 080-3920#

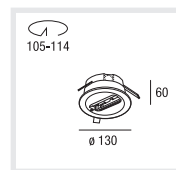
Accessories



Aufbaugehäuse Punktauslass
 Surface housing/point outlet
 Rosone per soffitto

COLOUR
 grey
 black
 white

CODE
 282-GA70-1
 282-GA70-2
 282-GA70-3

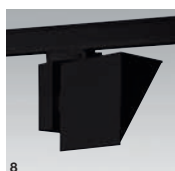


Einputzdose Punktauslass
 Recessed housing/point outlet
 Rosone per incasso nel soffitto

COLOUR
 grey
 black
 white

CODE
 282-XTSA76
 282-XTSA77
 282-XTSA78

Colours



080-... 6 grey
 7 white
 8 black