

MXA SYSTEM

AUFBAUPROFILE | ABGEHÄNGTE PROFILE SURFACE MOUNTED | SUSPENDED PROFILES PROFILI DA SOFFITTO | A SOSPENSIONE

398

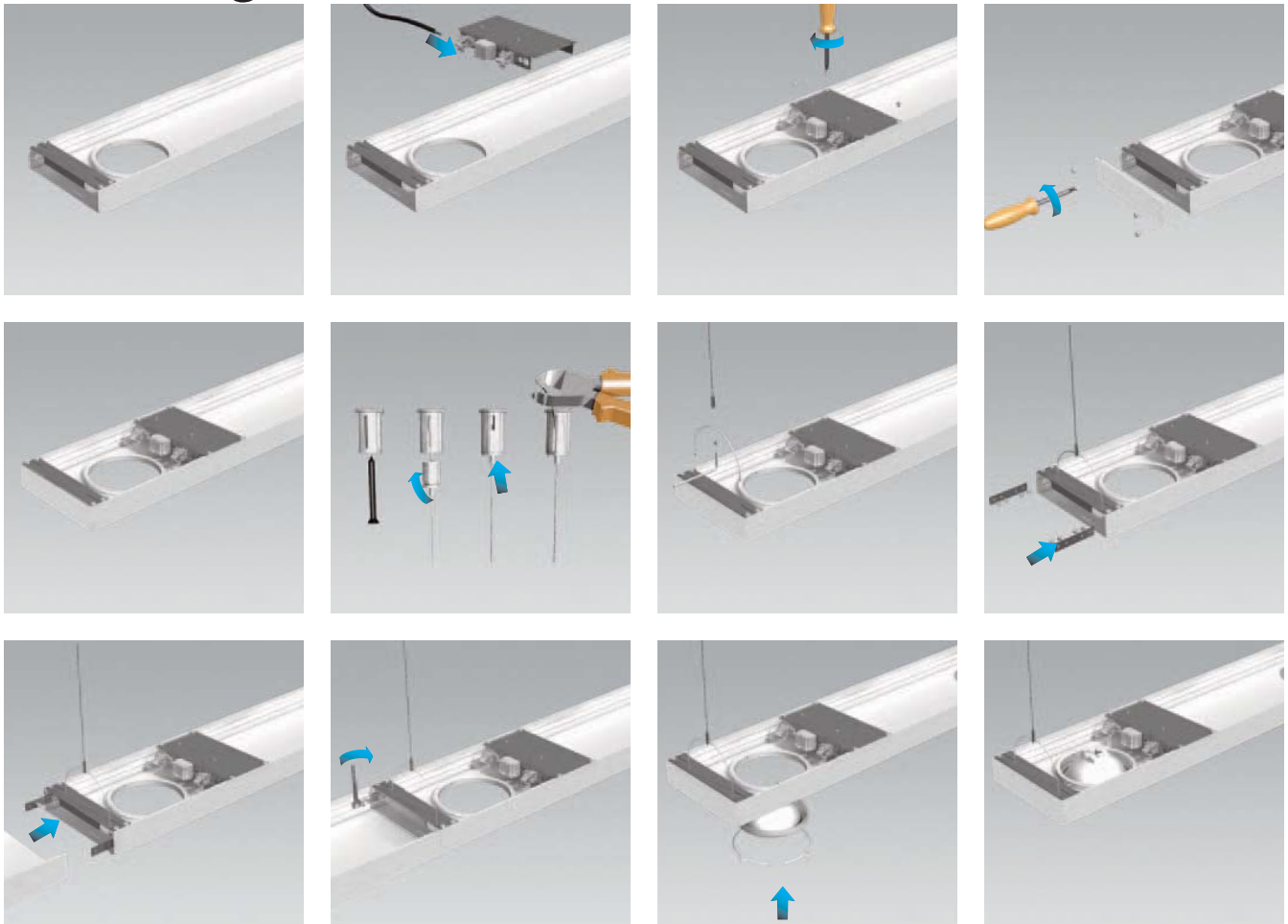


D
Als ein Klassiker unter den Lichtsystemen hat MXA bereits viele Trends kommen und gehen gesehen und präsentiert sich unbeeindruckt seit Jahren (beinahe) unverändert, was natürlich die Qualität des zugrundeliegenden Konzepts zeigt: Der schlanke Grundkörper dient als Träger für unterschiedliche Strahlereinsätze und kann sowohl als Einzelleuchte verwendet werden, als auch zu einem komplex strukturierten Lichtsystem kombiniert werden. MXA kommt überall dort zum Einsatz, wo mit Strahlern deutliche Lichtakzente gesetzt werden sollen und von der Decke abgehängte Systeme eingesetzt werden. Und nachdem MXA diese Aufgabe perfekt löst, wird MXA noch viele Trends kommen und gehen sehen...

E
As a classic amongst lighting systems, MXA has already seen many trends come and go and has presented itself (almost) unchanged for years, which naturally shows the quality of the underlying concept: The slim basic body acts as a carrier for different spot elements and can be used both as a single luminaire or combined into a lighting system with a complex structure. MXA is used everywhere requiring clear lighting accents using spots and where systems are suspended from the ceiling. And after MXA has solved this task perfectly it will see many more trends come and go...

I
Un classico nei sistemi di illuminazione, MXA ha già visto nascere e morire numerose tendenze e dopo anni si ripresenta (quasi) immutato. Naturalmente questo è indice della qualità del concetto: il corpo centrale snello funge da sostegno per diversi inserti di faretti e in tal modo può essere utilizzato sia come lampada singola sia come un sistema di illuminazione combinato con strutturazioni complesse. MXA viene impiegato soprattutto negli ambienti dove è necessario creare chiari accenti di luce con faretti e dove vengono installati sistemi sospesi al soffitto. E dopo che MXA avrà svolto alla perfezione questi compiti, vedrà nascere e morire ancora molte altre tendenze...

Mounting instructions



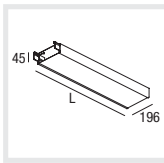
MXA SYSTEM

AUFBAUPROFIL | ABGEHÄNGTE PROFIL SURFACE MOUNTED | SUSPENDED PROFILES PROFILI DA SOFFITTO | A SOSPENSIONE

400



CHANNEL | ACCESSORIES



MXA Installation channel

L (MM)

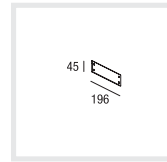
1200

2400

CODE

026-0120#

026-0240#



MXA Endstücke

MXA End caps

MXA Testate terminali

COLOUR

grey

white

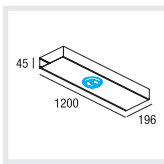
black

CODE

026-03046

026-03047

026-03048



MXA 1200 Installation channel

TYPE

1 spotlight

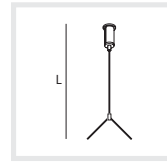
2 spotlights

Order spotlight separately!

CODE

026-0121#

026-0122#



MXA Seilabhangung

MXA Cable suspension

MXA Sospensione a cavo

L (MM)

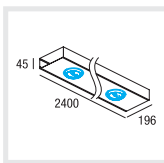
2000

4000

CODE

033-10526

033-10626



MXA 2400 Installation channel

TYPE

2 spotlights

4 spotlights

Order spotlight separately!

CODE

026-0242#

026-0244#



MXA Verbindungsleitung Silikon

MXA Connection cable silicone

MXA Cavo di collegamento in silicone

TYPE

3x1,5mm²

3x1,5mm²

3x1,5mm²

3x1,5mm²

L (MM)

500

1000

2000

3000

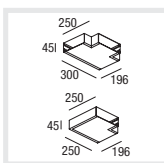
CODE

005-99230

005-99231

005-99232

005-99233



MXA Winkelverbinder

MXA Corner connector

MXA Giunto ad angolo

TYPE

corner 90°

t-connector

CODE

026-0254#

026-0324#



MXA Einspeisung

MXA Power feeder

MXA Alimentazione

TYPE

3x1,5mm²

5x1,5mm²

3x1,5mm²

5x1,5mm²

L (MM)

2000

4000

4000

CODE

005-3262#

005-3263#

005-3264#

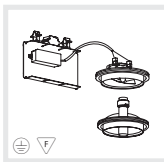
005-3265#

005-... 6 grey

7 white

8 black

INSETS



QR-LP 111 G53

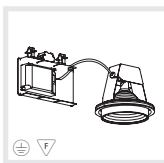
MXA SPOTLIGHT QR-LP 111 G53

CAPACITY

1x100W

CODE

033-1717#



HIR-CE111 GX8,5

MXA SPOTLIGHT HIR-CE111 GX8,5 EVG

CAPACITY

1x35W

1x70W

CODE

033-1100#

033-1300#

Colours



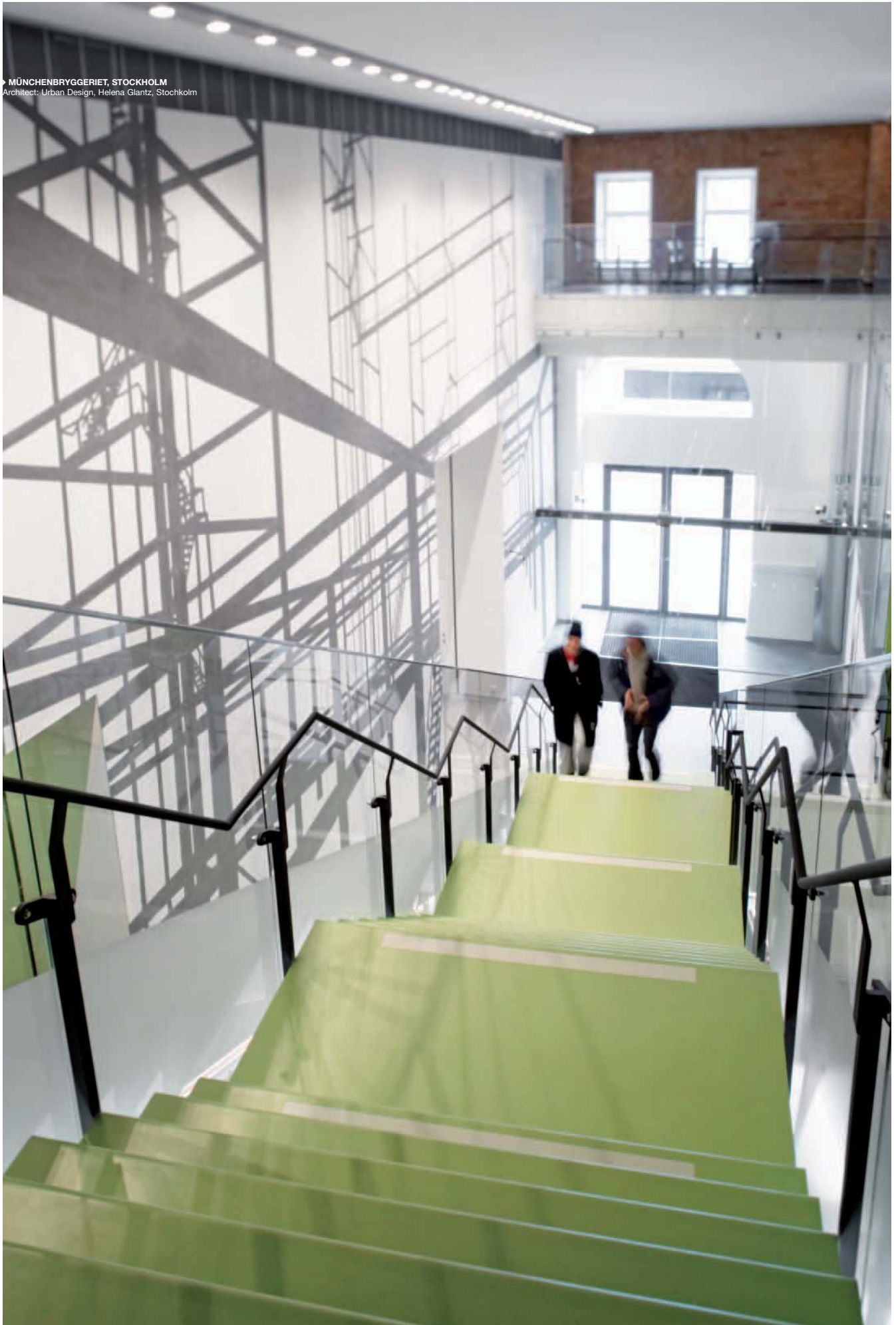
026-... 6 grey
7 white
8 black

Accessories



See page 101 for more accessories

Colour and protection filters
Lenses and honeycomb louver





▶ AVENUE ROAD SHOWROOM, TORONTO
Lighting design: Glenn Boccini / tpl lighting, Toronto

