

MITO FRAME 200

EINBAUSTRÄHLER RECESSED SPOTLIGHTS FARETTI DA INCASSO

88



D

Leuchtgehäuse aus Stahlblech, Strahler aus Aluminium
Oberfläche in weiß oder schwarz, seidenmatt
Rahmen aus Stahlblech in chrom, grau, schwarz oder weiß
Strahlerelement kardanisch gelagert, schwenkbar bis 30°
Wechselreflektoren aus Reinaluminium in 4 Ausstrahlwinkeln
Optional Betoneinbaugehäuse für Einbau in Sichtbeton
Betriebsgeräteanschluss der HIT Varianten mittels Stecker
Farbfilter, Linsen, Wabenraster (max. 1 Stk.) und RGB-LED Einsatz als Zubehör

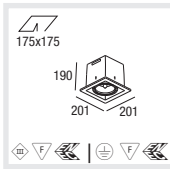
E

Housing made of sheet steel varnished white or black
Frame made of sheet steel in chrome, grey, black or white
Spotlight gimbal mounted, tiltable up to 30°
Changeable reflectors made of pure aluminium, 4 beam angles
Mounting housing for concrete installation available
Plug connection for control gear of HIT type
Colour filters, lenses and louvers (max. 1) available as accessories

I

Apparecchio di lamiera d'acciaio, verniciato bianco o nero
Cornice di lamiera d'acciaio in cromo, grigia, nera o bianca
Faretti cardanici, orientabili fino a 30°
Riflettori d'alluminio puro cambiabili di 4 angoli
Cassaforma per il montaggio in calcestruzzo
Varianti HIT: Connettore per collegare il reattore
Filtri colorati, lenti, reticoli a nido d'ape (solo 1 pz.) come acc.

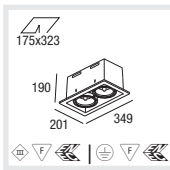
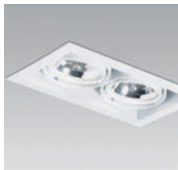
Type



MITO FRAME 200 QR-LP 111 G53
CAPACITY 1x100W **CODE** 052-255201#



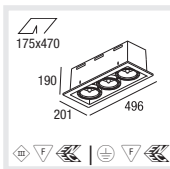
MITO FRAME 200 HIT-CE G12
CAPACITY 1x35/70W **CODE** 052-255801#



MITO FRAME 200 QR-LP 111 G53
CAPACITY 2x100W **CODE** 052-256201#



MITO FRAME 200 HIT-CE G12
CAPACITY 2x35/70W **CODE** 052-256801#



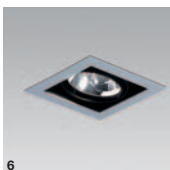
MITO FRAME 200 QR-LP 111 G53
CAPACITY 3x100W **CODE** 052-257201#



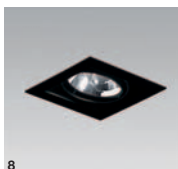
MITO FRAME 200 HIT-CE G12
CAPACITY 3x35/70W **CODE** 052-257801#

052-..... **S** spot 14°
M medium 24°
F flood 40°
W wide flood 60°

Colours



052-..... **4**, chrome/black
6, grey/black
7, white
8, black



8

Accessories



Elektronischer Transformator
Electronic transformer
Trasformatore elettronico

CAPACITY	L/B/H (MM)	CODE
70VA/230-240V/12V	102/51/30	002-70700
105VA/230-240V/12V	102/51/30	002-71000
150VA/230V/12V	206/45/40	002-71500



Vorschaltgeräteeinheit mit Kabel und Anschlussstecker
Control gear unit with cable and connector plug
Blocco di reattore elettronico con cavo e connettore a spina

CAPACITY	L/B/H (MM)	CODE
35W/220-240V electr.	186/89/37	002-86035
70W/220-240V electr.	186/89/37	002-86070



Betoneinbaugehäuse für Sichtbeton
Mounting housing for exposed concrete
Corpo per montaggio in calcestruzzo a vista

TYPE	L/B/H (MM)	CODE
1 lamp	445/167/205	052-2911510
2 lamps	445/315/205	052-2912510
3 lamps	445/462/205	052-2913510



Betoneinbaugehäuse für gespachtelte Betondecken
Mounting housing for primed concrete ceilings
Corpo per montaggio in calcestruzzo stuccato

TYPE	L/B/H (MM)	CODE
1 lamp	445/167/205	052-2911520
2 lamps	445/315/205	052-2912520
3 lamps	445/462/205	052-2913520



RGB LED INSET 12 12x1,1W 24V DC XAL-BUS

LED COLOUR	BEAM	CODE
RGB	super spot 6°	055-27096V
RGB	spot 15°	055-27096S
RGB	medium 24°	055-27096M
RGB	wide flood 80°	055-27096W

Use only with spotlight for QR-LP111 G53
Order XAL DMX power master unit separately
See page 101 for more details



See page 101 for more accessories

Colour and protection filters
Lenses and honeycomb louver