



**D**

Leuchtenkörper aus Stahlblech weiß lackiert oder aus Edelstahl  
 Randlos in Gipskartonwände integrierbar  
 Reflektor mit asymmetrischer Abstrahlcharakteristik aus Aluminium  
 Oberfläche glatt oder geriffelt, Leuchtmittel mit Schutzglas abgedeckt  
 Einbaublech für Gipskartonwand von 10-20mm als Zubehör  
 Einputzgehäuse für Ziegelwand als Zubehör

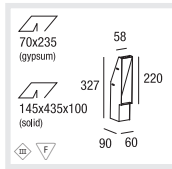
**E**

Housing of white varnished sheet steel or stainless steel  
 Trimless installation in plasterboard walls  
 Reflector with asymmetric light distribution made of aluminium  
 Surface plane or grooved, lamp covered with protection glass  
 Mounting set for plasterboard walls from 10-20mm as accessory  
 Installation housing for solid walls available

**I**

Corpo di lamiera d'acciaio verniciato bianco o acciaio inox  
 Da incassare a scomparsa nei soffitti di cartongesso  
 Riflettore con caratteristica asimmetrica in alluminio  
 Superficie liscia o rigata, lampadine coperte da vetro di protezione  
 Set di montaggio per cartongesso di 10-20mm  
 Corpo da incasso per muri di mattoni

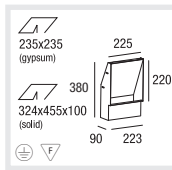
## Type



**VAGA 60 QR-CBC51 GU5,3**

**CAPACITY**  
1x35W

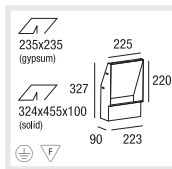
**CODE**  
017-5417#



**VAGA 225 TC-DEL G24q-3 220-240V EVG**

**CAPACITY**  
1x26W

**CODE**  
017-5410#



**VAGA 225 QT-DE11/12 R7s 220-240V EVG**

**CAPACITY**  
1x150W

**CODE**  
017-5519#

## Colours



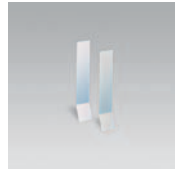
5



7

017-...5 stainless steel  
7 white

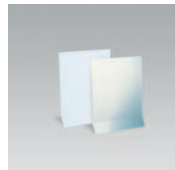
## Accessories



**VAGA 60 Reflektor**  
VAGA 60 Reflector  
VAGA 60 Riflettore

**TYPE**  
white plane  
white grooved  
stainless steel plane

**CODE**  
129-38842W  
129-38843W  
129-38843E



**VAGA 225 Reflektor**  
VAGA 225 Reflector  
VAGA 225 Riflettore

**TYPE**  
white plane  
white grooved  
stainless steel plane

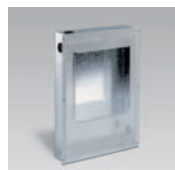
**CODE**  
129-38803W  
129-38804W  
129-38804E



**VAGA 60 Einputzgehäuse für massive Wand**  
VAGA 60 Installation housing for solid walls  
VAGA 60 Corpo da incasso per parete massiccia

**L/B/H (MM)**  
415/125/95

**CODE**  
129-38876E



**VAGA 225 Einputzgehäuse für massive Wand**  
VAGA 225 Installation housing for solid walls  
VAGA 225 Corpo da incasso per parete massiccia

**L/B/H (MM)**  
435/305/95

**CODE**  
129-38880E



**VAGA Einbaublech für Gipskarton von 10-20mm**  
VAGA Mounting set for plasterboard 10-20mm  
VAGA Set di montaggio per cartongesso 10-20mm

**TYPE**  
VAGA 60  
VAGA 225

**CODE**  
017-50060  
017-50220



**Elektronischer Transformator**  
Electronic transformer  
Trasformatore elettronico

**CAPACITY**  
70VA/230-240V/12V  
105VA/230-240V/12V

**L/B/H (MM)**  
102/51/30  
102/51/30

**CODE**  
002-70700  
002-71000