



D

Leuchtenkörper aus gegossenem Beton mit integrierter Leuchteneinheit
 Innenliegende Schutzabdeckung aus Klarglas, Schutzart IP 54
 Variante mit energieeffizienten e² LEDs 1,1W mit hoher Farbwiedergabe
 Lieferbar in Lichtfarben 3000K und 4000K
 Integriertes Schraubgewinde, Transportösen im Lieferumfang
 Inkl. IP 68 Anschlussdose und Giesharz
 Farbabweichungen und geringe Oberflächenfehler sind produktionsbedingt

E

Luminaire made of poured concrete with integrated light unit
 Inlying protective cover made of clear-glass, IP 54 rating
 Type with energy efficient e² LEDs 1,1W with high CRI
 Available in the light colours 3000K and 4000K
 Integrated screw thread, transport loops included
 Incl. IP 68 terminal and installation resin
 Minor colour and surface structure variations are due to production

I

Corpo in cemento fuso con inserto integrato
 Coperchio di protezione interno in vetro chiaro, IP 54
 Variante con LED e² da 1,1W con resa cromatica alta
 Disponibile nei colori di luce 3000K e 4000K
 Filettatura di vite integrata, asole per trasporto integrate
 Incl. scatola di collegamento IP 68 e resina da colata
 Piccole variazioni di colore e superficie si spiegano dalla produzione

Type



BEDO 400 LED 220-240V

CAPACITY	LED COLOUR	CODE
8x1,1W	3000K 89 lm/led	088-2410510
8x1,1W	4000K 102 lm/led	088-2410610

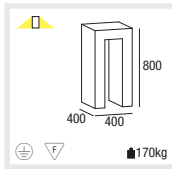


BEDO 400 HIT-TC-CE G8,5 EVG

CAPACITY	CODE
1x35W	085-51100

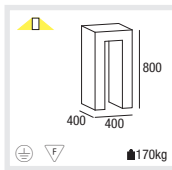
BEDO 400 TC-D G24d-3 VVG

CAPACITY	CODE
1x26W	085-51500



BEDO 800 LED 220-240V

CAPACITY	LED COLOUR	CODE
8x1,1W	3000K 89 lm/led	088-2420510
8x1,1W	4000K 102 lm/led	088-2420610



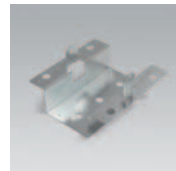
BEDO 800 HIT-TC-CE G8,5 EVG

CAPACITY	CODE
1x35W	085-53100

BEDO 800 TC-D G24d-3 VVG

CAPACITY	CODE
1x26W	085-53500

Accessories



Bodenplatte zur Befestigung
 Ground plate for mounting
 Lastra di fondazione

TYPE	CODE
soil fundament	085-50000
solid surfaces (concrete, tarmac, etc.)	085-50010