

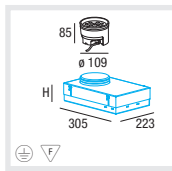


**D**  
 Bodeneinbaustrahler aus massivem Aluminium eloxiert, begehbar  
 Abdeckung aus teilsatiniertem 12mm Sicherheitsglas, Schutzart IP 67  
 Strahler dicht vergossen mit 2m Anschlussleitung  
 RGB LEDs für dynamischen Farbwechsel mit DMX oder DALI-Signal  
 Variante mit energieeffizienten e<sup>2</sup> LEDs 1,1W mit hoher Farbwiedergabe  
 Lieferbar in den Farben rot und blau oder in weiß 3000K und 4000K  
 Optiken für 6°, 15°, 24° oder 80° Abstrahlung lieferbar  
 Optional für randlosen Einbau oder mit Abdeckrahmen als Zubehör

**E**  
 Walk-over, floor-recessed spotlight made of solid anodised aluminium  
 Cover made of partially satin 12mm safety glass, IP 67 protection  
 Spotlight sealed tightly with 2m connection cable  
 RGB LEDs for dynamic colour change via DMX or DALI signal  
 Type with energy efficient e<sup>2</sup> LEDs 1,1W with high CRI  
 Available in the light colours red and blue or in white 3000K and 4000K  
 Optic lenses for 6°, 15°, 24° or 80° beam angles  
 Options for trimless installation or bezel available as accessories

**I**  
 Faretto da incasso a terra in alluminio massiccio, anodizzato, percorribile  
 Copertura in vetro di sicurezza da 12mm, in parte satinato, grado di prot. IP 67  
 Faretto colato in modo denso con 2m di cavo di collegamento  
 LED RGB per cambio di colore dinamico con DMX o DALI  
 Variante con LED e<sup>2</sup> da 1,1W con resa cromatica alta  
 Disponibile nei colori rosso e blu o bianco 3000K e 4000K  
 Ottiche per 6°, 15°, 24° o 80° di radiazione  
 Per montaggio a scomparsa o con cornice di copertura come accessorio

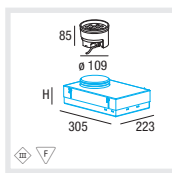
## Type



**e<sup>2</sup> LED**

**LETU LED 220-240V**

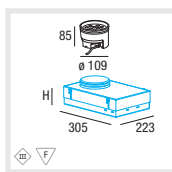
CAPACITY	LED COLOUR	CODE
12x1,1W	red	088-5120116
12x1,1W	blue	088-5120216
12x1,1W	white 3000K	088-5120516
12x1,1W	white 4000K	088-5120616



**LETU 24V DC XAL DMX-BUS**

CAPACITY	CODE
12x1,1W RGB	088-5120946

Order XAL DMX power master unit separately

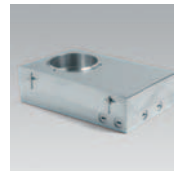


**LETU 24V DC DALI-BUS**

CAPACITY	CODE
12x1,1W RGB	088-5120936

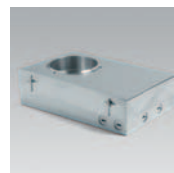
088-... V super spot 6°  
 S spot 15°  
 M medium 24°  
 W wide flood 80°

## Accessories



**Bodeneinbaugehäuse randlos**  
 Trimless mounting housing for installation in floors  
 Corpo di montaggio a scomparsa in pavimenti

TYPE	L/B/H (MM)	CODE
24V   220-240V	305/223/90-135	086-31166



**Einputzdose randlos für Beton und Mauerwerk**  
 Trimless mounting housing for brick and concrete walls  
 Cornice di montaggio a scomparsa in muratura e calcestruzzo

TYPE	L/B/H (MM)	CODE
24V   220-240V	303/200/138	086-31266



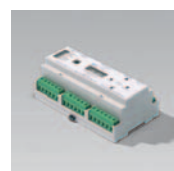
**Abdeckrahmen für Bodeneinbau**  
 Cover frame for floor mounting  
 Cornice per montaggio in pavimenti

TYPE	Ø/H (MM)	CODE
24V   220-240V	135/20	086-31446



**Vacuumsauger**  
 Vacuum cup  
 Ventosa

CODE  
 086-30000



**DMX MASTER UNIT 24V DC**

TYPE	L/B/H (MM)	CODE
Memory for 8 individual scenes Input for external DMX-controller	159/90/58	002-51010

See page 637 for more details



**LED Konverter 220-240V**  
 LED converter 220-240V  
 Convertitore LED 220-240V

CAPACITY	L/B/H (MM)	CODE
25VA/24V DC	167/42/31	002-60025
100VA/24V DC	192/88/36	002-60100
100VA/24V DC IP67	230/65/42	002-60071