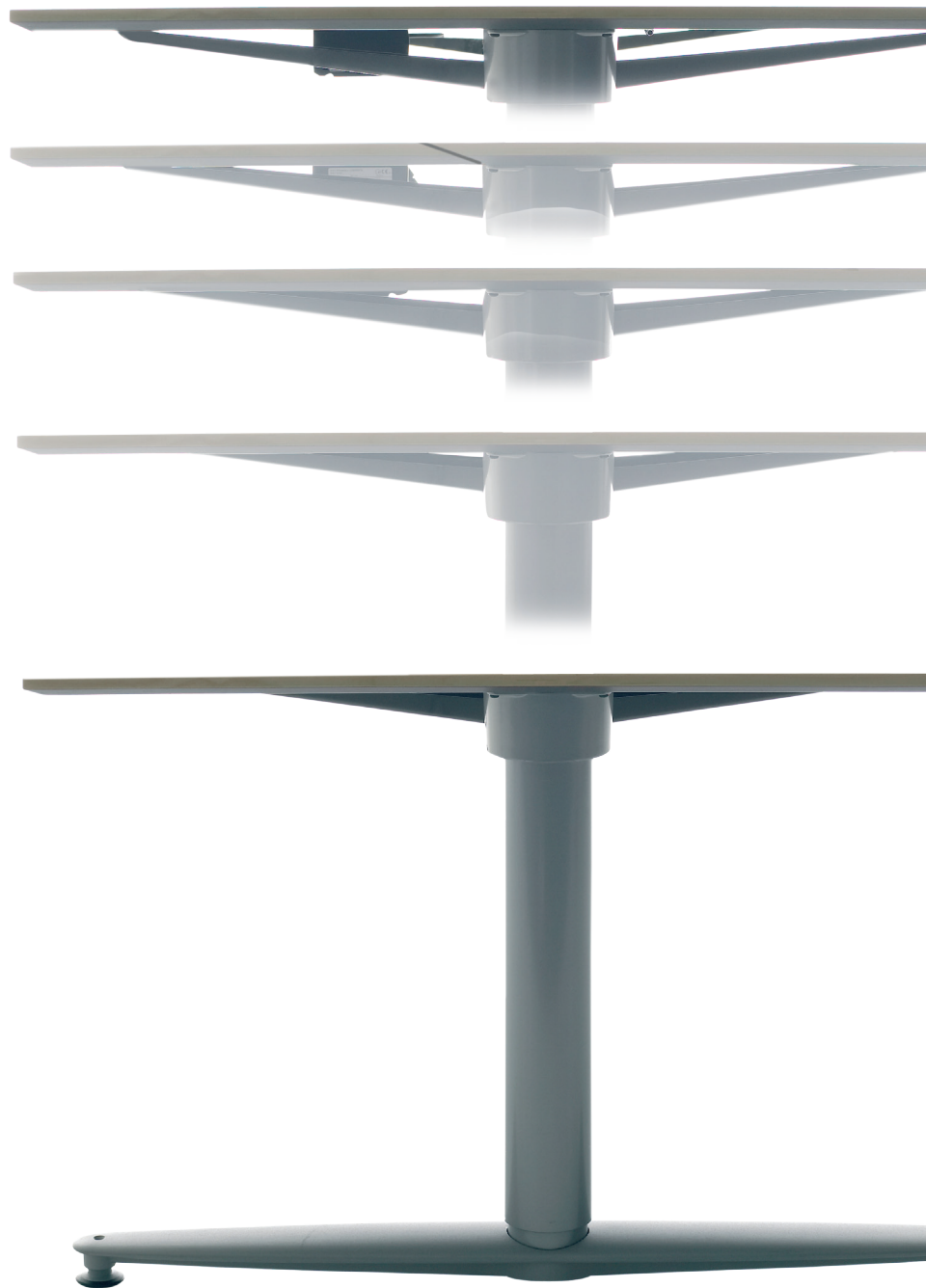


Kinnarps

series[T]



series[τ]

The flexible Series[τ] is designed so that everyone can create their own optimum workspace – whilst fitting harmoniously into the overall look of the office. This way, the individual and the group both get what they need to perform at their best. Series[τ] is equally suitable for workplaces and for meetings, conferences and break rooms. Different table top shapes and table combinations are just part of what Series[τ] has to offer. Choose the combination that suits you best.



Desk Series[τ] T146 SS, T209S SS. **Storage unit** Series[e] 1P400 DO, 2P400 O, 1P800 TA, 2P800 DO. **Accessories** Frame TAS180M, CD-rack TAS12CD, Marker holder TASBOX, Magazine shelf TASM75. **Desk chair** 9000, 9332 N1. **Chair** lxi 571.

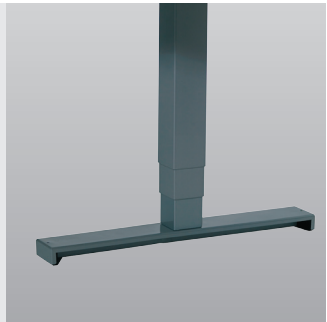
Sit/stand tables – SS

Electronic sit/stand solutions enable you to raise or lower the entire worktop at the press of a button. The underframe (SS) is modular and can be assembled under any table combination. Meets current maximum values for magnetic and electrical fields. Programmable manual control and unpowered connection are optional. Desk height: 615–1,280 mm. Maximum load: 100 kg.



Sit/stand tables – SSA

The electronic, rectangular sit/stand leg is gradually adjustable. The movement between the telescopic parts is synchronised. Desk height: 630–1,295 mm. Maximum load: 100 kg.



Sit/stand desk with electric adjustment – SE

Adjust table height at the press of a button. Thanks to the electric height adjustment function, the entire desk can be adjusted vertically in a matter of seconds. Meets current maximum values for magnetic and electrical fields. Maximum load: 100 kg. Desk height: 600–820 mm.



Sit/stand tables also available with manual adjustment – SM

Simply adjust the table to the desired height with a crank at the side of the leg. Each leg is adjusted individually. Desk height: 600–820 mm

Fixed height T-frames – SF

Fixed height T-underframes are particularly suitable for café or break-out areas. Naturally, they fully suite with your Series[tj] workstations. Desk height: 724 mm.



Sit/sit – SMA

The manually adjustable leg (SMA) for seated work is easy to customise for different users. You can use the crank to raise or lower the table top to suit individual requirements. The laser-engraved marks on the legs make it easy to set several tables at the same height. Desk height: 600–820 mm.



Pillar table with fixed height – PH/TPL/TPM/TPH

Conference tables and smaller meeting tables have a five-star, pillar base and are fixed height. The underframe is also available in standing height (PH) for break-out and café tables. Desk height: 550 mm (TPL), 724 mm (TPM), 1,100 mm (TPH).



Extension tables with pillar base – EP/TPG

Pillar table with footplate and adjustable table height. Choose between manual height adjustment (EP) or pillar with gas sprung height adjustment (TPG). Desk height: 620–820 mm.



Adjustable feet

All desks in Series[tj] have adjustable feet to compensate for uneven floor surfaces.



Castors

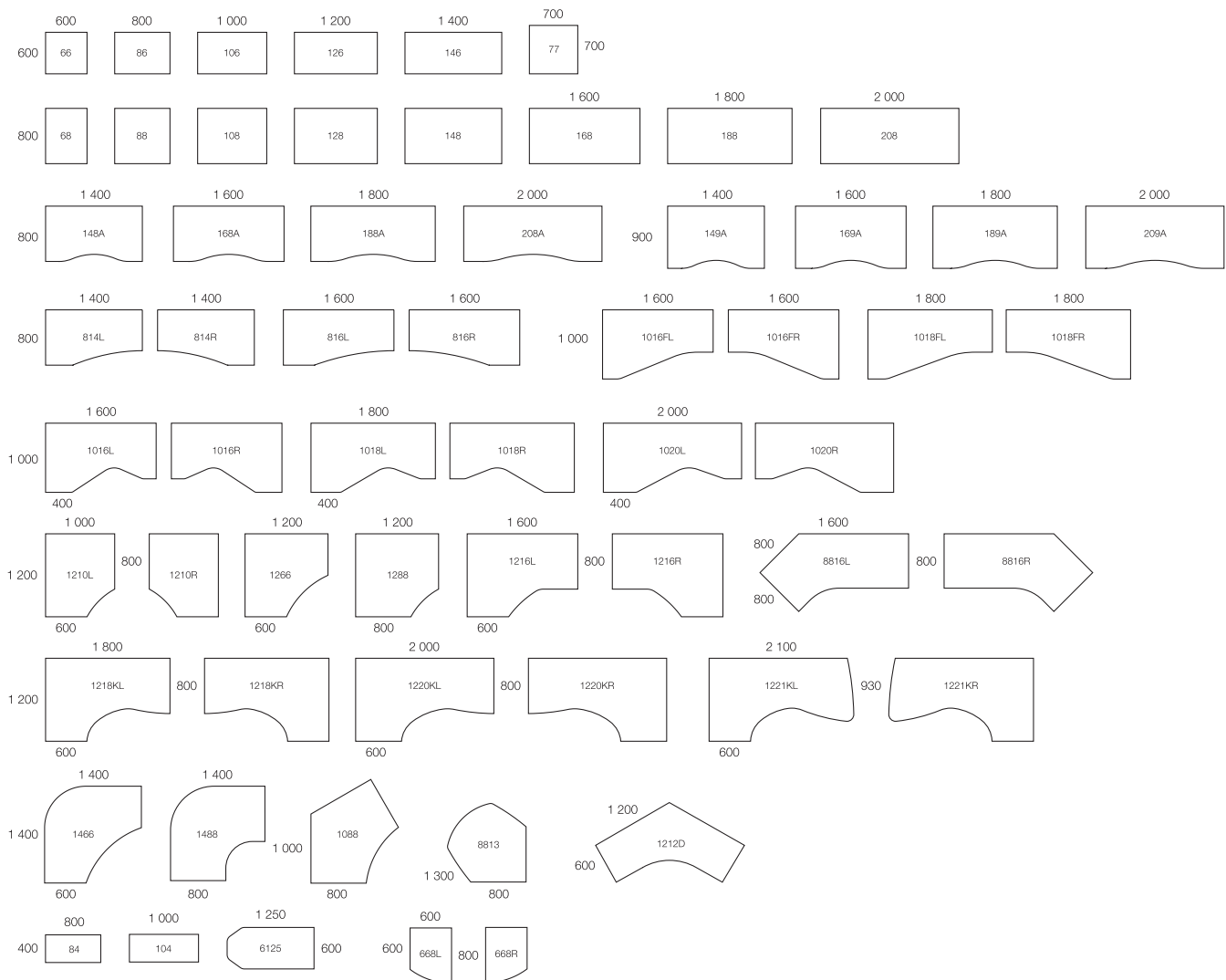
For tables up to 820 mm, you can create mobility with easy-rolling, lockable castors.



Range

Series[T] is a furniture system equally suitable for workstations, meeting, conference and break-out spaces. You can combine the wide range of table top shapes with different functions, to achieve almost limitless combinations. The system is based on a strong and centred rail system with T or A-legs. A workstation combination can have two, three, but no more than four legs. Supplement your combination with a vertically adjustable monitor desktop, additional work tops and freestanding pillar tables.

Corner table height 600–820 mm (SM, SE), 615–1 280 mm (SS), 620–820 mm (A-legs) and 630–1 295 mm (SSA)



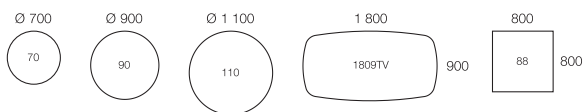
series[T] – work tables

Desk top 23 mm, chipboard with wood veneer and solid wood lipping (beech, birch, oak), laminate (beech, birch, oak, white, light grey). **Underframe** Powder-coated (grey), central steel rail (55 x 55 mm). T-frame (silver or white, SE only in silver) consisting of steel tubing, SM, SE: Ø 60–70 mm, SS, SSA: 90 x 90 mm, SMA: 600–820 mm and foot with adjustment screw for uneven floors. Options: castors. **Table height** Adjustable sit/sit (SM) with crank and (SE) with electric height adjustment: 600–820 mm. Options: castors (C): +65 mm. Adjustable sit/stand (SS) with electric height adjustment and round legs: 615–1280 mm. Adjustable sit/stand (SSA) with electric height adjustment and square legs: 630–1295 mm. Connecting leg SM 600–820 mm. **Options** Panels, electrics tidy, cabling, computer accessories, local storage, armrest, etc. **Scale** 1:100. **Unit** mm.

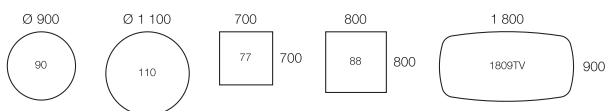
series[T]

If you choose Series[T] for your conference, meeting room or for break-out spaces, you have several different options available. Tables with a five-star pillar base instead of a T-frame can be particularly effective.

Pillar table (TPL) height 550 mm



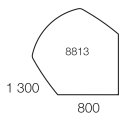
Pillar table (TPM) height 724 mm



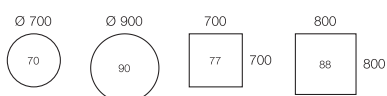
Pillar table (TPH) height 1,100 mm



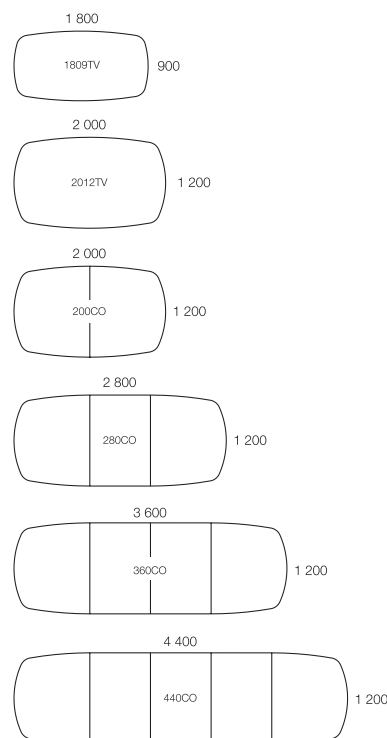
Extension table (EP) height 620-820 mm



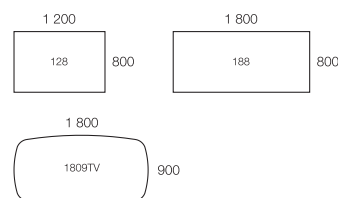
Freestanding table height 700–1,115 mm (TPG)



Meeting/conference table (TPM)



Meeting table (SF) height 724 mm



series[T] – meeting tables

Desk top 23 mm, chipboard with wood veneer and solid wood lipping (beech, birch, oak) laminate (beech, birch, oak, white, light grey). **Underframe** Pillar base (Ø 114 mm) in powder-coated steel (silver or white) with cruciform base in aluminium (silver/white) or footplate in steel (dark grey). **Table height** Fixed with cruciform base (TPL): 550 mm, (TPM): 724 mm, (TPH): 1100 mm. Adjustable (gas spring) with cruciform base (TPG): 700–1115 mm. Adjustable with pillar and footplate (EP): 620–820 mm. Fixed with T-frames (SF): 724 mm. **Options** Electrics tidy and cabling for conference tables. **Scale** 1:100. Unit mm.

