

m o o o i[®]



ZLIQ Sofa

ZLIQ Sofa by Marcel Wanders

Designer

Marcel Wanders

Year of design

2012

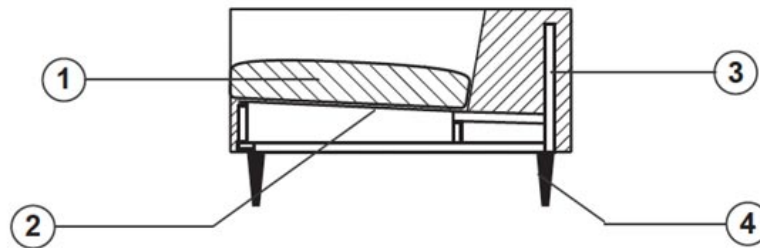
Material

steel, foam and dacron

technical

The Zliq sofa is constructed from a steel box frame covered in foam and dacron, the seat cushions made in foam and removable.

Canvas sofa is produced with removable covers except for the categories Faux, Arredo leather or Cervino leather. Back pillows are separately available.



1. Multiple density fire retardant foam composition + dacron
2. Elastic straps fixed on the wood base
3. Steel box frame covered
4. Chromed cast aluminium legs

upholstery categories

Macchedil Sottile	Jacquard Fresco
Macchedil Grezzo	Jacquard Old
Faux	Blue
Softlinen	Velour
Bouclé	Arredo Leather
Jacquard Andaz	Cervino Leather

Macchedil, Sottile

composition

49% vi, 24% pl, 21% li, 6% co

abrasion

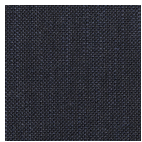
30.000 martindale

lightfastness 4

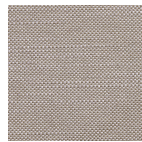
firetest

FR BS5852 0/1

EN1021 I&2



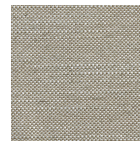
Macchedil Sottile
Black indigo



Macchedil Sottile
Pinkish



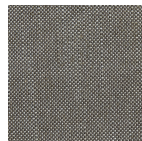
Macchedil Sottile
Off white



Macchedil Sottile
Light grey



Macchedil Sottile
Light brown



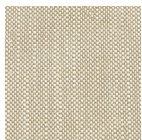
Macchedil Sottile
Grey grey



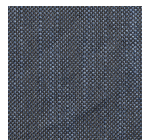
Macchedil Sottile
Anthracite



Macchedil Sottile
Blue grey



Macchedil Sottile
Cappucino



Macchedil Sottile
Deep blue

Macchedil, Grezzo

composition

47% co, 20% vi, 18% pi, 8% li, 5% pc, 2% af

abrasion

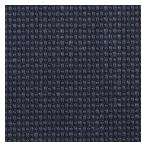
18.000 martindale

lightfastness 4

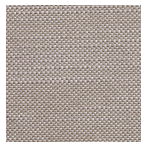
firetest

FR BS5852 0/1

EN1021 1&2



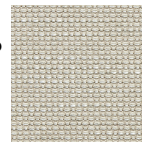
Macchedil Grezzo
Black indigo



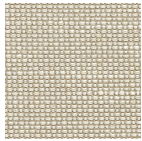
Macchedil Grezzo
Pinkish



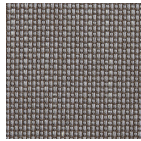
Macchedil Grezzo
Offwhite



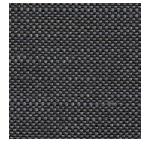
Macchedil Grezzo
Light grey



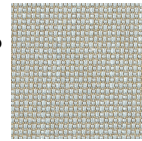
Macchedil Grezzo
Light brown



Macchedil Grezzo
Grey grey



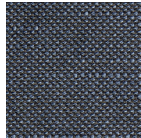
Macchedil Grezzo
Anthracite



Macchedil Grezzo
Blue grey



Macchedil Grezzo
Cappuchino



Macchedil Grezzo
Deepblue

Faux

composition

100% pl

abrasion

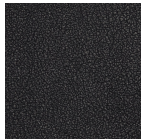
50.000 martindale

lightfastness 4

firetest

FR BS5852 0/1

EN1021 I&2



Faux
Black



Faux
Brown

Softlinen

composition

100% Linen

abrasion

25.000 martindale

lightfastness 6

firetest

FR BS5852 0/1

EN1021 I&2



Softlinen
Beige



Softlinen
Brown

Bouclé

composition

43% co, 28% pan, 14% pa, 12% vi, 3% pl

abrasion

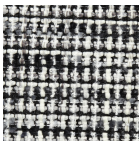
20.000> martindale

lightfastness 4

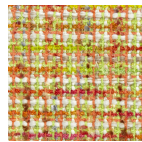
firetest

FR BS5852 0/1

EN1021 I&2



Bouclé
Black white



Bouclé
Rainbow

jacquard andaz

composition:

34% cotton - 30% viscose - 24% linen - 12% polyamide

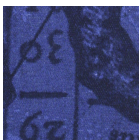
abrasion:

25000 martindale

firetest:

BS 5852 : Part 1 : 1979

BS EN 1021 I&2



jacquard
andaz

Jaquard Fresco

composition

40% vi ,36% co,14% pl, 10% li

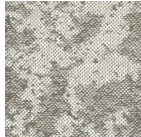
abrasion

20.000> martindale

firetest

FR BS5852 0/1

EN1021 I&2



Jaquard
Fresco

Jacquard Old Blue

composition

52% vi, 38% co, 10% li

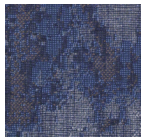
abrasion

20.000> martindale

firetest

FR BS5852 0/1

EN1021 I&2



Jacquard
Old Blue

Velour

composition

77% wo, 8% pa, 15% pl

abrasion

100.000 martindale

lightfastness 7

firetest

FR BS5852 0/1

EN1021 I&2



Velour
Coral



Velour
Mineral



Velour
Moss

Arredo Leather

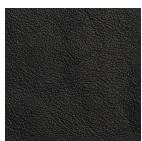
composition

100% semi aniline leather

firetest

FR BS5852 0/1

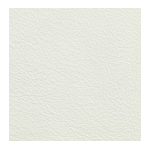
EN1021 I&2



Arredo Leather
Black



Arredo Leather
Brown



Arredo Leather
White

Cervino Leather

composition

100% aniline leather

firetest

FR BS5852 0/1

EN1021 I&2



Cervino Leather
Anthracite



Cervino Leather
Cognac



Cervino Leather
Mud



Cervino Leather
Pure

pillows

Pillows is available seperately.

CMHR foam, always upholstered in white or one of in the available fabrics.

dimensions

