

Catifa 46 / 4 Wood legs

Design by Lievore Altherr Molina, 2004

Art. 0355: 4 wood leg base and polypropylene shell

Chair with four leg solid oak base (natural oak, bleached oak, wengé, teak color) and shell available in single-color and bi-color polypropylene or upholstered in two grades of hard leather.

Dimensions*



clip.it.easy

* Files CAD 2D - 3D available for download at www.arper.com

Shipment details

Art. 0355	kg	m ³	lb	ft ³
1 PCS = 2 boxes	4.40	0.297	9.70	10.488
4 PCS = 2 boxes	15.26	0.368	33.64	12.995

Base finishes



L0020
Bleached
oak



L0022
Natural
oak



L0021
Wengé



L0023
Teak effect

Materials

Polypropylene



PO
Polypropylene
one color
9 colors



PO
Polypropylene
two colors
9 colors

Hard leather



CU
Hard leather
grade 1
4 colors



CT
Hard leather
grade 2
13 colors

Catifa 46 / 4 Wood legs

Design by Lievore Altherr Molina, 2004

Art. 0356: 4 wood leg base and upholstered shell

Chair with four leg solid oak base (natural oak, bleached oak, wengé, teak color) and shell upholstered in leather, faux leather, fabric or customer's fabric.

Dimensions*



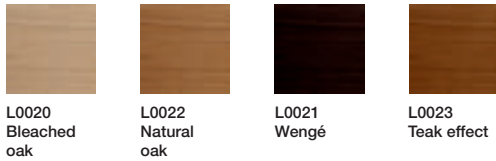
clip.it.easy®

* Files CAD 2D - 3D available for download at www.arper.com

Shipment details

Art. 0356	kg	m ³	lb	ft ³
1 PCS = 2 boxes	4.40	0.297	9.70	10.488
4 PCS = 2 boxes	15.26	0.368	33.64	12.995

Base finishes

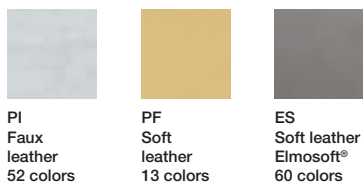


Materials

Fabric by kvadrat and No Stain



Faux leather, Soft leather and chrome free leather by elmo.



Catifa 46 / 4 Wood legs

Design by Lievore Altherr Molina, 2004

Art. 0359: 4 wood leg base and wood shell

Chair with four leg solid oak base (natural oak, bleached oak, wengé) and double-curved wood shell available in three finishes (natural oak, bleached oak, wengé).



Dimensions*



* Files CAD 2D - 3D available for download at www.arper.com

Shipment details

Art. 0359	kg	m ³	lb	ft ³
1 PCS = 2 boxes	4.40	0.297	9.70	10.488
4 PCS = 2 boxes	15.26	0.368	33.64	12.995

Base finishes



L0020
Bleached
oak



L0022
Natural
oak



L0021
Wengé

Materials

Wood



L0020
Bleached
oak



L0022
Natural
oak



L0021
Wengé

Catifa 46 / 4 Wood legs

Design by Lievore Altherr Molina, 2004

Art. 0358: 4 wood leg base and polypropylene shell with front-face upholstered

Chair with four leg solid oak base (natural oak, bleached oak, wengé) and polypropylene shell with front-face upholstered in leather, faux leather, fabric or customer's fabric.

Dimensions*



* Files CAD 2D - 3D available for download at www.arper.com

Shipment details

Art. 0358	kg	m ³	lb	ft ³
1 PCS = 2 boxes	4.40	0.297	9.70	10.488
4 PCS = 2 boxes	15.26	0.368	33.64	12.995



clip.it.easy

Base finishes



L0020
Bleached oak



L0022
Natural oak



L0021
Wengé



L0023
Teak effect

Materials

Polypropylene



PO
Polypropylene
9 colors

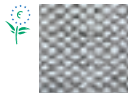
Fabric by kvadrat and No Stain



Topas 2
67 colors



Hallingdal 65
58 colors



Remix 2
49 colors



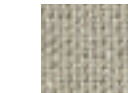
Cava 3
49 colors



Flora 2
33 colors



Pro 2
35 colors



Lazio 2
28 colors



Clara
28 colors



Tempo
22 colors



Divina MD
27 colors



Scuba
24 colors



No Stain
34 colors



Divina 3
56 colors



Divina Melange 2
24 colors



Tonus 3
64 colors



Field
24 colors



Steelcut Trio 2
49 colors



Sunniva
12 colors



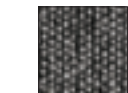
Steelcut 2
37 colors



Pause 4
43 colors



Canvas
28 colors



Savanna
13 colors

Catifa 46 / 4 Wood legs

Design by Lievore Altherr Molina, 2004

Faux leather, Soft leather and chrome free leather by **elmo**.



PI
Faux
leather
52 colors



PF
Soft
leather
13 colors



ES
Soft leather
Elmosoft®
60 colors

arper

F +39 0422 791800

T +39 0422 7918

www.arper.com

Catifa 46 / 4 Wood legs

Design by Lievore Altherr Molina, 2004

Art. 0358: 4 wood leg base and polypropylene shell with seat surface upholstered

Chair with four leg solid oak base (natural oak, bleached oak, wengé) and polypropylene shell with cushion upholstered in leather, faux leather, fabric or customer's fabric applied to the seat surface.

Dimensions*



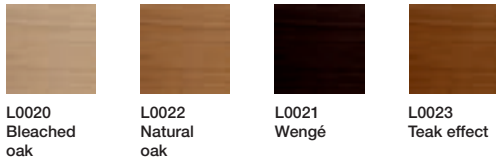
√clip.it.easy®

* Files CAD 2D - 3D available for download at www.arper.com

Shipment details

Art. 0358	kg	m ³	lb	ft ³
1 PCS = 2 boxes	4.40	0.297	9.70	10.488
4 PCS = 2 boxes	15.26	0.368	33.64	12.995

Base finishes



Materials

Polypropylene



Fabric by kvadrat and No Stain



Catifa 46 / 4 Wood legs

Design by Lievore Altherr Molina, 2004

Faux leather, Soft leather and chrome free leather by **elmo**.



PI
Faux
leather
52 colors



PF
Soft
leather
13 colors



ES
Soft leather
Elmosoft®
60 colors

arper

F +39 0422 791800

T +39 0422 7918

www.arper.com

Catifa 46 / 4 Wood legs

Design by Lievore Altherr Molina, 2004

Art. 0311: 4 wood leg base and shell with upholstered cover

Chair with four leg solid oak base (natural oak, bleached oak, wengé, teak color) and shell upholstered with a removable non-washable cover in leather, faux leather, fabric or customer's fabric.

Dimensions*



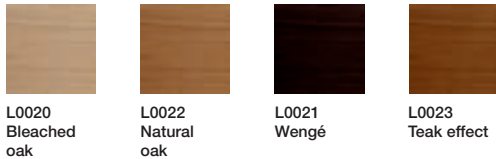
* Files CAD 2D - 3D available for download at www.arper.com

Shipment details

Art. 0311	kg	m ³	lb	ft ³
1 PCS = 2 boxes	4.40	0.297	9.70	10.488
4 PCS = 2 boxes	15.26	0.368	33.64	12.995

clip.it.easy

Base finishes

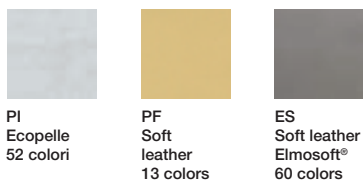


Materials

Fabric by kvadrat and No Stain



Faux leather, Soft leather and chrome free leather by elmo.



Catifa 46 / 4 Wood legs

Design by Lievore Altherr Molina, 2004

Options and accessories



1



2



3



4



5

- 1 Link
- 2 Cover 1
- 3 Cover 2
- 4 Cover 3
- 5 Cover 4

Catifa 46 / 4 wood legs

Design by Lievore Altherr Molina, 2004

Fire retardant test



UK DOMESTIC:
BS5852-1 Sch.5 Part1: Hard leather grade 1
and 2. BS5852/90 Sez.5 cigarette match:
Polypropylene



UK CONTRACT:
BS7176-07 Medium Hazard: Fabric (Flora 2, Pro,
Tonus 3, Topas 2, Hallingdal 65). Elmosoft, Faux
leather. BS7176-07 Low Hazard: Soft leather.
Faux leather. Fabric (Orange 2, Divina 3, Divina
Melange 2).
UK DOMESTIC:
BS5852-1 Sch.4-5 Part1: Faux leather. Soft
leather, Elmosoft. Fabric (Flora 2, Divina 3,
Divina Melange 2, Hallingdal 65, Tonus 3, Topas
2). BS5852-1 Sch. 4 Part1: Fabric (Pro 2).
USA Technical Bulletin 117: Fabric. Faux
leather.



UK DOMESTIC:
BS5852/90 Sez.5 cigarette match



UK CONTRACT:
BS7176-07 Medium Hazard: Fabric (Flora 2, Pro,
Tonus 3, Topas 2, Hallingdal 65). Elmosoft, Faux
leather. BS7176-07 Low Hazard: Soft leather.
Faux leather. Fabric (Orange 2, Divina 3, Divina
Melange 2).
UK DOMESTIC:
BS5852-1 Sch.4-5 Part1: Faux leather. Soft
leather, Elmosoft. Fabric (Flora 2, Divina 3,
Divina Melange 2, Hallingdal 65, Tonus 3, Topas
2). BS5852-1 Sch. 4 Part1: Fabric (Pro 2).
USA Technical Bulletin 117: Fabric. Faux
leather.



UK CONTRACT:
BS7176-07 Medium Hazard: Fabric (Flora 2, Pro,
Tonus 3, Topas 2, Hallingdal 65). Elmosoft, Faux
leather. BS7176-07 Low Hazard: Soft leather.
Faux leather. Fabric (Orange 2, Divina 3, Divina
Melange 2).
UK DOMESTIC:
BS5852-1 Sch.4-5 Part1: Faux leather. Soft
leather, Elmosoft. Fabric (Flora 2, Divina 3,
Divina Melange 2, Hallingdal 65, Tonus 3, Topas
2). BS5852-1 Sch. 4 Part1: Fabric (Pro 2).
USA Technical Bulletin 117: Fabric. Faux
leather.



arper

F +39 0422 791800

T +39 0422 7918

www.arper.com

* For more information on product's certification and environment documents visit www.arper.com or contact us at environment@arper.com

Catifa 46 / 4 wood legs

Design by Lievore Altherr Molina, 2004

Fire retardant test



UK CONTRACT:
BS7176-07 Medium Hazard: Fabric (Flora 2, Pro, Tonus 3, Topas 2, Hallingdal 65). Elmosoft, Faux leather. BS7176-07 Low Hazard: Soft leather. Faux leather. Fabric (Orange 2, Divina 3, Divina Melange 2).
UK DOMESTIC:
BS5852-1 Sch.4-5 Part1: Faux leather. Soft leather, Elmosoft. Fabric (Flora 2, Divina 3, Divina Melange 2, Hallingdal 65, Tonus 3, Topas 2). BS5852-1 Sch. 4 Part1: Fabric (Pro 2).
USA Technical Bulletin 117: Fabric. Faux leather.



arper

F +39 0422 791800

T +39 0422 7918

www.arper.com

* For more information on product's certification and environment documents visit www.arper.com or contact us at environment@arper.com